

THE  
**LOCK**  
AT GREENFORD QUAY

LONDON · UB6 0GQ

FLOORPLAN  
BROCHURE

# Open up to The Lock at Greenford Quay

The Lock at Greenford Quay is located within a thriving new waterfront neighbourhood in West London. The development offers spacious 1, 2 and 3 bedroom apartments, with balconies overlooking landscaped gardens and the beautiful Grand Union Canal. The stunning residents' roof top terrace further enhances these spectacular views. Perfectly located, transport links are available from Greenford station on the Central line or Sudbury Hill on the Piccadilly line.

The Lock is designed with you in mind and offers the perfect balance between a busy London lifestyle and the relaxing outdoors. Within the development you can opt to live in the eighteen-storey landmark tower with expansive views over the Grand Union Canal, Horsenden Hill and towards the city, or opt for the six-storey building overlooking the beautifully landscaped gardens.

Reflecting the work-life balance choices for many of us, every apartment is spacious and perfect for working from home. When you need a break, just step out onto your balcony or terrace and take a deep breath of fresh air. Or take a stroll through your neighbourhood and enjoy all that vibrant Greenford Quay has to offer.

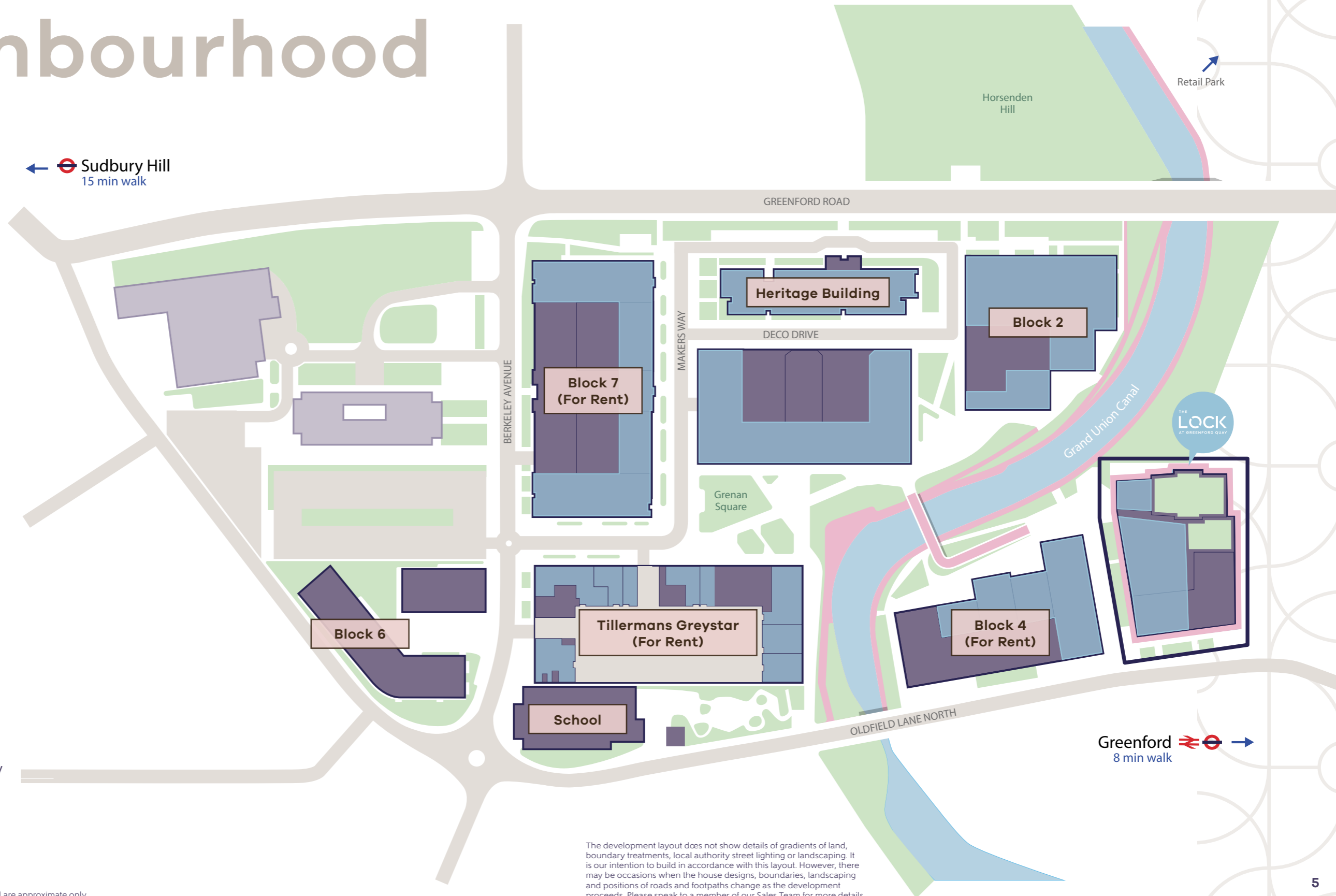
# Open up to a new neighbourhood



← Sudbury Hill  
15 min walk

Retail Park

- Key**
- Buildings
  - Commerical units
  - Green spaces
  - Cycle/pedestrian walkway



Greenford  
8 min walk →

Walking times taken from google.co.uk/maps and are approximate only.

The development layout does not show details of gradients of land, boundary treatments, local authority street lighting or landscaping. It is our intention to build in accordance with this layout. However, there may be occasions when the house designs, boundaries, landscaping and positions of roads and footpaths change as the development proceeds. Please speak to a member of our Sales Team for more details.



# Upper Ground Floor Block B

## Apartment B-01

Kitchen/Living/Dining	9.05m x 3.20m	29'8" x 10'8"
Bedroom 1	5.80m x 2.80m	19'2" x 9'3"
Bedroom 2	4.90m x 2.70m	16'1" x 9'0"
<b>Total Area</b>	<b>80.40 sq. m.</b>	<b>865.40 sq. ft.</b>

## Apartment B-02

Kitchen/Living/Dining	5.30m x 5.00m	17'3" x 16'5"
Bedroom 1	3.90m x 3.40m	12'9" x 11'4"
Bedroom 2	3.90m x 3.40m	13'0" x 11'3"
<b>Total Area</b>	<b>74.50 sq. m.</b>	<b>801.90 sq. ft.</b>

## Apartment B-03

Kitchen/Living/Dining	5.30m x 5.00m	17'4" x 16'5"
Bedroom 1	3.90m x 3.40m	12'9" x 11'4"
Bedroom 2	3.90m x 3.40m	13'0" x 11'3"
<b>Total Area</b>	<b>74.50 sq. m.</b>	<b>801.90 sq. ft.</b>

## Apartment B-04

Kitchen/Living/Dining	9.00m x 3.30m	29'8" x 10'9"
Bedroom 1	5.50m x 2.80m	17'11" x 9'4"
Bedroom 2	5.50m x 2.75m	18'0" x 9'0"
<b>Total Area</b>	<b>79.00 sq. m.</b>	<b>850.3 sq. ft.</b>

## Apartment B-05

Kitchen/Living/Dining	9.30m x 3.20m	30'6" x 10'7"
Bedroom 1	5.60m x 2.80m	18'6" x 9'2"
<b>Total Area</b>	<b>55.60 sq. m.</b>	<b>598.50 sq. ft.</b>



**KEY:**  
 ES – En suite S – Services  
 St – Storage W – Wardrobe

Floorplan shown is indicative only. The layouts are for indicative purposes only. The developer reserves the right to make changes to these plans prior to exchange of contracts. For exact plot specification, details of external and internal finishes, dimensions and floorplan differences, please speak to a Sales Consultant for more details. The dimensions given are accurate to within plus or minus two inches (50mm) from floor level and include wardrobe spaces where applicable. They are not intended to be used for carpet sizes, appliance space or items of furniture. The information is for general guidance only.

06	18
05	17
04	16
03	15
02	14
01	13
UG	12
	11
	10
	09
	08
	07
	06
	05
	04
	03
	02
	01
	UG

Block A

Block B

# First Floor

## Block B

### Apartment B-06

Kitchen/Living/Dining	9.05m x 3.20m	29'8" x 10'8"
Bedroom 1	5.80m x 2.90m	19'2" x 9'5"
Bedroom 2	4.90m x 2.75m	16'1" x 9'0"
<b>Total Area</b>	<b>80.80 sq. m.</b>	<b>869.70 sq. ft.</b>

### Apartment B-07

Kitchen/Living/Dining	5.20m x 5.00m	17'3" x 16'5"
Bedroom 1	3.90m x 3.45m	12'7" x 11'7"
Bedroom 2	4.00m x 3.40m	13'1" x 11'3"
<b>Total Area</b>	<b>74.50 sq. m.</b>	<b>801.90 sq. ft.</b>

### Apartment B-08

Kitchen/Living/Dining	5.20m x 5.00m	17'3" x 16'5"
Bedroom 1	3.90m x 3.45m	12'7" x 11'7"
Bedroom 2	4.00m x 3.40m	13'1" x 11'3"
<b>Total Area</b>	<b>74.50 sq. m.</b>	<b>801.90 sq. ft.</b>

### Apartment B-09

Kitchen/Living/Dining	9.05m x 3.30m	29'8" x 10'9"
Bedroom 1	5.50m x 2.80m	17'11" x 9'4"
Bedroom 2	5.50m x 2.75m	18'0" x 9'0"
<b>Total Area</b>	<b>79.00 sq. m.</b>	<b>850.30 sq. ft.</b>

### Apartment B-10

Kitchen/Living/Dining	9.30m x 3.20m	30'6" x 10'7"
Bedroom 1	5.60m x 2.80m	18'6" x 9'4"
<b>Total Area</b>	<b>56.00 sq. m.</b>	<b>602.80 sq. ft.</b>

### Apartment B-11

Kitchen/Living/Dining	7.30m x 4.00m	24'0" x 13'0"
Bedroom 1	5.30m x 2.80m	17'4" x 9'3"
<b>Total Area</b>	<b>55.60 sq. m.</b>	<b>598.50 sq. ft.</b>

### Apartment B-12

Kitchen/Living/Dining	7.90m x 4.10m	26'0" x 13'4"
Bedroom 1	4.40m x 3.40m	14'5" x 11'2"
<b>Total Area</b>	<b>56.10 sq. m.</b>	<b>603.90 sq. ft.</b>

### Apartment B-13

Kitchen/Living/Dining	6.50m x 5.10m	21'4" x 16'9"
Bedroom 1	3.95m x 3.00m	13'0" x 9'9"
Bedroom 2	3.60m x 3.40m	11'11" x 11'1"
<b>Total Area</b>	<b>76.70 sq. m.</b>	<b>825.60 sq. ft.</b>

### Apartment B-14

Kitchen/Living/Dining	6.50m x 5.10m	21'4" x 16'9"
Bedroom 1	3.95m x 3.00m	13'0" x 9'9"
Bedroom 2	3.60m x 3.40m	11'11" x 11'1"
<b>Total Area</b>	<b>76.60 sq. m.</b>	<b>824.50 sq. ft.</b>

### Apartment B-15

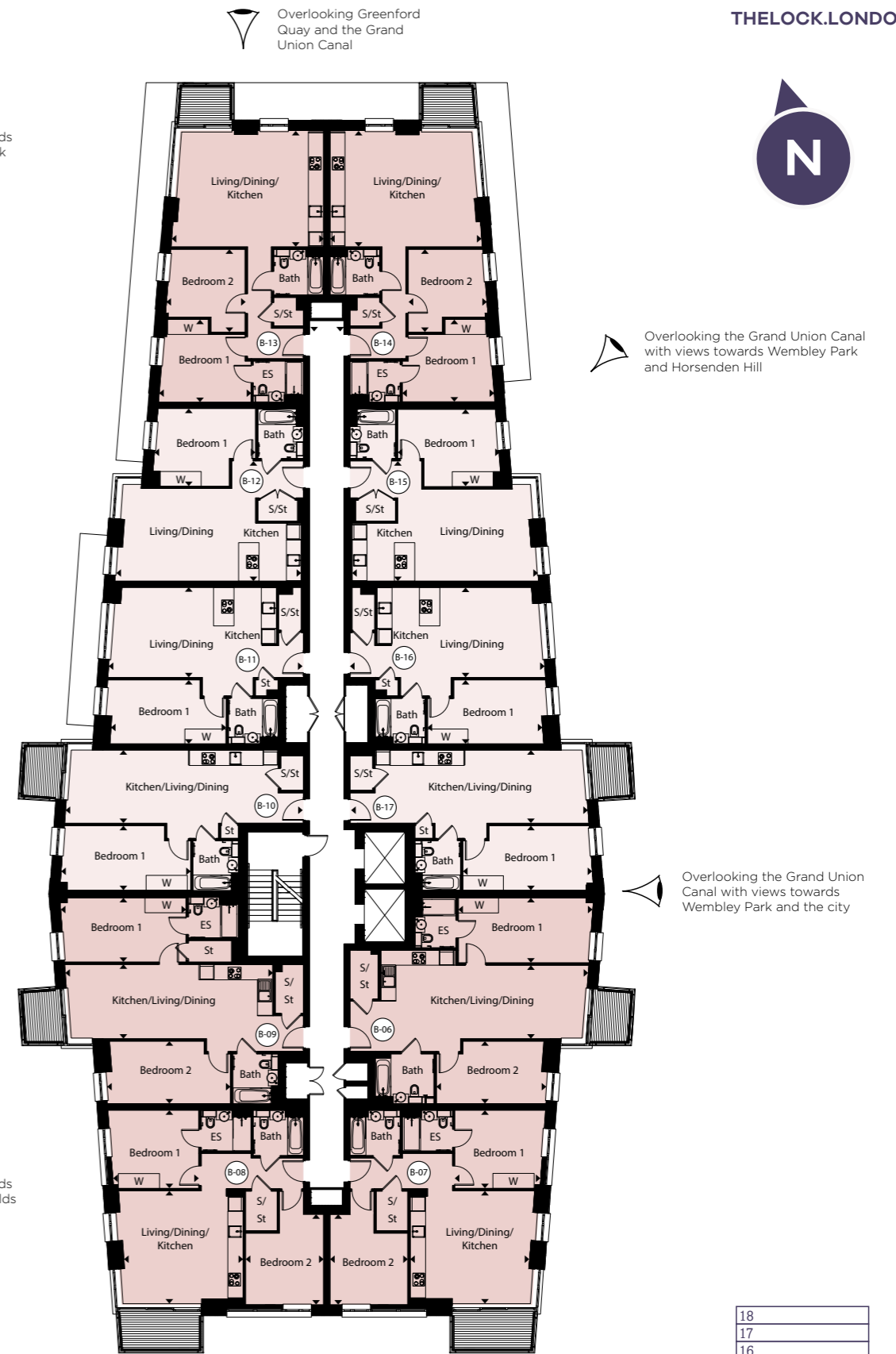
Kitchen/Living/Dining	7.90m x 4.05m	26'1" x 13'3"
Bedroom 1	4.40m x 3.40m	14'5" x 11'2"
<b>Total Area</b>	<b>56.00 sq. m.</b>	<b>602.80 sq. ft.</b>

### Apartment B-16

Kitchen/Living/Dining	7.30m x 4.00m	24'0" x 13'0"
Bedroom 1	5.30m x 2.80m	17'5" x 9'3"
<b>Total Area</b>	<b>55.60 sq. m.</b>	<b>598.50 sq. ft.</b>

### Apartment B-17

Kitchen/Living/Dining	9.30m x 3.20m	30'6" x 10'7"
Bedroom 1	5.65m x 2.80m	18'7" x 9'3"
<b>Total Area</b>	<b>56.00 sq. m.</b>	<b>598.50 sq. ft.</b>



**KEY:**  
 ES – En suite S – Services  
 St – Storage W – Wardrobe

18	
17	
16	
15	
14	
13	
12	
11	
10	
09	
08	
07	
06	
05	
04	
03	
02	
01	
UG	

Floorplan shown is indicative only. The layouts are for indicative purposes only. The developer reserves the right to make changes to these plans prior to exchange of contracts. For exact plot specification, details of external and internal finishes, dimensions and floorplan differences, please speak to a Sales Consultant for more details. The dimensions given are accurate to within plus or minus two inches (50mm) from floor level and include wardrobe spaces where applicable. They are not intended to be used for carpet sizes, appliance space or items of furniture. The information is for general guidance only.

# Second Floor

## Block B

### Apartment B-18

Kitchen/Living/Dining	9.05m x 3.20m	29'8" x 10'8"
Bedroom 1	5.80m x 2.90m	19'2" x 9'5"
Bedroom 2	4.90m x 2.75m	16'1" x 9'0"
<b>Total Area</b>	<b>80.80 sq. m.</b>	<b>869.70 sq. ft.</b>

### Apartment B-19

Kitchen/Living/Dining	5.20m x 5.00m	17'3" x 16'5"
Bedroom 1	3.90m x 3.45m	12'7" x 11'7"
Bedroom 2	4.00m x 3.40m	13'1" x 11'3"
<b>Total Area</b>	<b>74.50 sq. m.</b>	<b>801.90 sq. ft.</b>

### Apartment B-20

Kitchen/Living/Dining	5.20m x 5.00m	17'3" x 16'5"
Bedroom 1	3.90m x 3.45m	12'7" x 11'7"
Bedroom 2	4.00m x 3.40m	13'1" x 11'3"
<b>Total Area</b>	<b>74.50 sq. m.</b>	<b>801.90 sq. ft.</b>

### Apartment B-21

Kitchen/Living/Dining	9.05m x 3.30m	29'8" x 10'9"
Bedroom 1	5.50m x 2.80m	17'11" x 9'4"
Bedroom 2	5.50m x 2.75m	18'0" x 9'0"
<b>Total Area</b>	<b>79.00 sq. m.</b>	<b>850.30 sq. ft.</b>

### Apartment B-22

Kitchen/Living/Dining	9.30m x 3.20m	30'6" x 10'7"
Bedroom 1	5.60m x 2.80m	18'6" x 9'4"
<b>Total Area</b>	<b>56.00 sq. m.</b>	<b>602.80 sq. ft.</b>

### Apartment B-23

Kitchen/Living/Dining	7.30m x 4.00m	24'0" x 13'0"
Bedroom 1	5.30m x 2.80m	17'4" x 9'3"
<b>Total Area</b>	<b>55.60 sq. m.</b>	<b>598.50 sq. ft.</b>

### Apartment B-24

Kitchen/Living/Dining	7.90m x 4.10m	26'0" x 13'4"
Bedroom 1	4.40m x 3.40m	14'5" x 11'2"
<b>Total Area</b>	<b>56.10 sq. m.</b>	<b>603.90 sq. ft.</b>

### Apartment B-25

Kitchen/Living/Dining	6.50m x 5.10m	21'4" x 16'9"
Bedroom 1	3.95m x 3.00m	13'0" x 9'9"
Bedroom 2	3.60m x 3.40m	11'11" x 11'1"
<b>Total Area</b>	<b>76.70 sq. m.</b>	<b>825.60 sq. ft.</b>

### Apartment B-26

Kitchen/Living/Dining	6.50m x 5.10m	21'4" x 16'9"
Bedroom 1	3.95m x 3.00m	13'0" x 9'9"
Bedroom 2	3.60m x 3.40m	11'11" x 11'1"
<b>Total Area</b>	<b>76.60 sq. m.</b>	<b>824.50 sq. ft.</b>

### Apartment B-27

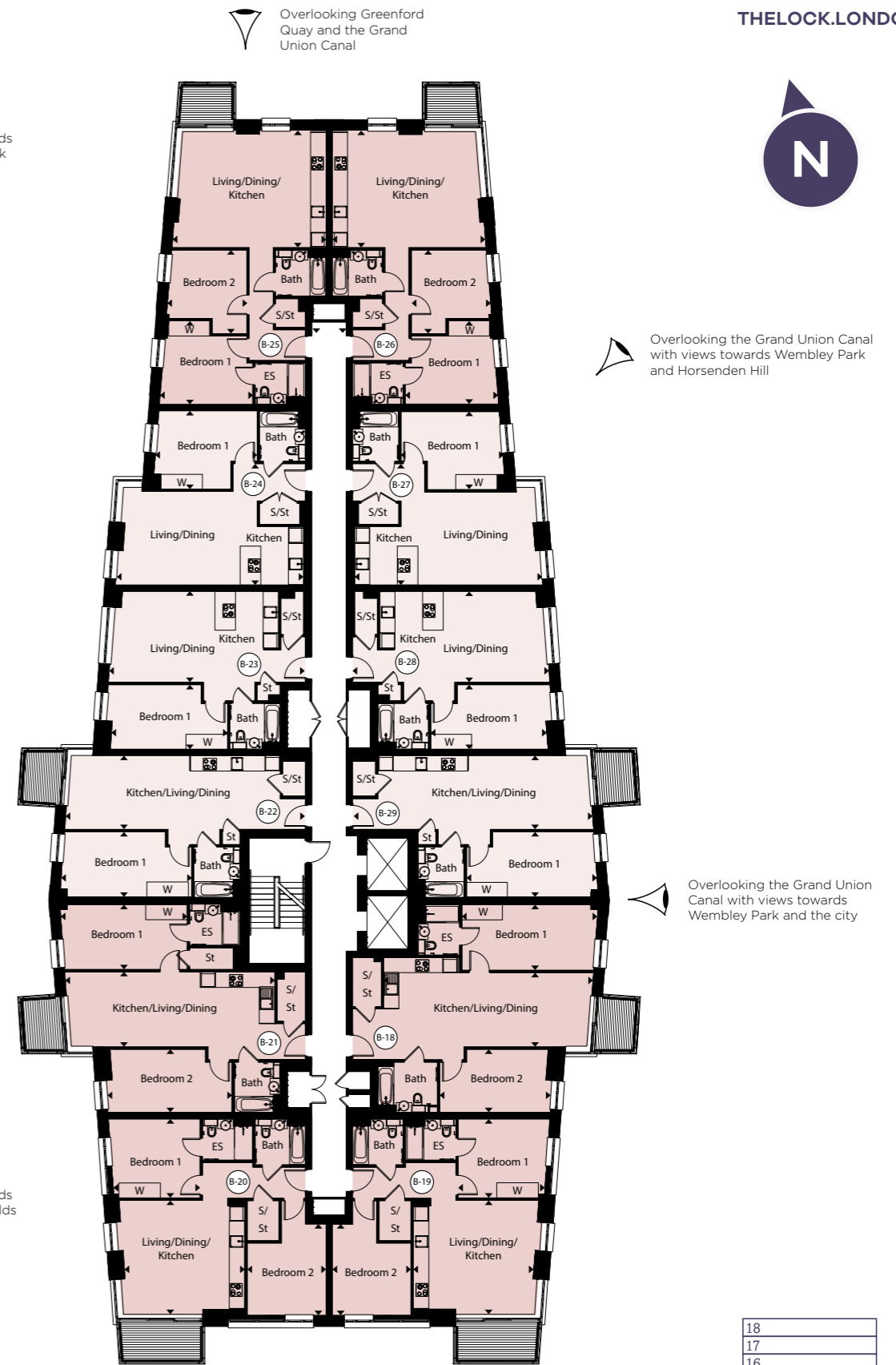
Kitchen/Living/Dining	7.90m x 4.05m	26'1" x 13'3"
Bedroom 1	4.40m x 3.40m	14'5" x 11'2"
<b>Total Area</b>	<b>56.00 sq. m.</b>	<b>602.80 sq. ft.</b>

### Apartment B-28

Kitchen/Living/Dining	7.30m x 4.00m	24'0" x 13'0"
Bedroom 1	5.30m x 2.80m	17'5" x 9'3"
<b>Total Area</b>	<b>55.60 sq. m.</b>	<b>598.50 sq. ft.</b>

### Apartment B-29

Kitchen/Living/Dining	9.30m x 3.20m	30'6" x 10'7"
Bedroom 1	5.65m x 2.80m	18'7" x 9'3"
<b>Total Area</b>	<b>56.00 sq. m.</b>	<b>598.50 sq. ft.</b>



**KEY:**  
 ES – En suite S – Services  
 St – Storage W – Wardrobe

18	
17	
16	
15	
14	
13	
12	
11	
10	
09	
08	
07	
06	
05	
04	
03	
02	
01	
UG	

Floorplan shown is indicative only. The layouts are for indicative purposes only. The developer reserves the right to make changes to these plans prior to exchange of contracts. For exact plot specification, details of external and internal finishes, dimensions and floorplan differences, please speak to a Sales Consultant for more details. The dimensions given are accurate to within plus or minus two inches (50mm) from floor level and include wardrobe spaces where applicable. They are not intended to be used for carpet sizes, appliance space or items of furniture. The information is for general guidance only.

# Third Floor

## Block B

### Apartment B-30

Kitchen/Living/Dining	9.05m x 3.20m	29'8" x 10'8"
Bedroom 1	5.80m x 2.90m	19'2" x 9'5"
Bedroom 2	4.90m x 2.75m	16'1" x 9'0"
<b>Total Area</b>	<b>80.80 sq. m.</b>	<b>869.70 sq. ft.</b>

### Apartment B-31

Kitchen/Living/Dining	5.20m x 5.00m	17'3" x 16'5"
Bedroom 1	3.90m x 3.45m	12'7" x 11'7"
Bedroom 2	4.00m x 3.40m	13'1" x 11'3"
<b>Total Area</b>	<b>74.50 sq. m.</b>	<b>801.90 sq. ft.</b>

### Apartment B-32

Kitchen/Living/Dining	5.20m x 5.00m	17'3" x 16'5"
Bedroom 1	3.90m x 3.45m	12'7" x 11'7"
Bedroom 2	4.00m x 3.40m	13'1" x 11'3"
<b>Total Area</b>	<b>74.50 sq. m.</b>	<b>801.90 sq. ft.</b>

### Apartment B-33

Kitchen/Living/Dining	9.05m x 3.30m	29'8" x 10'9"
Bedroom 1	5.50m x 2.80m	17'11" x 9'4"
Bedroom 2	5.50m x 2.75m	18'0" x 9'0"
<b>Total Area</b>	<b>79.00 sq. m.</b>	<b>850.30 sq. ft.</b>

### Apartment B-34

Kitchen/Living/Dining	9.30m x 3.20m	30'6" x 10'7"
Bedroom 1	5.60m x 2.80m	18'6" x 9'4"
<b>Total Area</b>	<b>56.00 sq. m.</b>	<b>602.80 sq. ft.</b>

### Apartment B-35

Kitchen/Living/Dining	7.30m x 4.00m	24'0" x 13'0"
Bedroom 1	5.30m x 2.80m	17'4" x 9'3"
<b>Total Area</b>	<b>55.60 sq. m.</b>	<b>598.50 sq. ft.</b>

### Apartment B-36

Kitchen/Living/Dining	7.90m x 4.10m	26'0" x 13'4"
Bedroom 1	4.40m x 3.40m	14'5" x 11'2"
<b>Total Area</b>	<b>56.10 sq. m.</b>	<b>603.90 sq. ft.</b>

### Apartment B-37

Kitchen/Living/Dining	6.50m x 5.10m	21'4" x 16'9"
Bedroom 1	3.95m x 3.00m	13'0" x 9'9"
Bedroom 2	3.60m x 3.40m	11'11" x 11'1"
<b>Total Area</b>	<b>76.70 sq. m.</b>	<b>825.60 sq. ft.</b>

### Apartment B-38

Kitchen/Living/Dining	6.50m x 5.10m	21'4" x 16'9"
Bedroom 1	3.95m x 3.00m	13'0" x 9'9"
Bedroom 2	3.60m x 3.40m	11'11" x 11'1"
<b>Total Area</b>	<b>76.60 sq. m.</b>	<b>824.50 sq. ft.</b>

### Apartment B-39

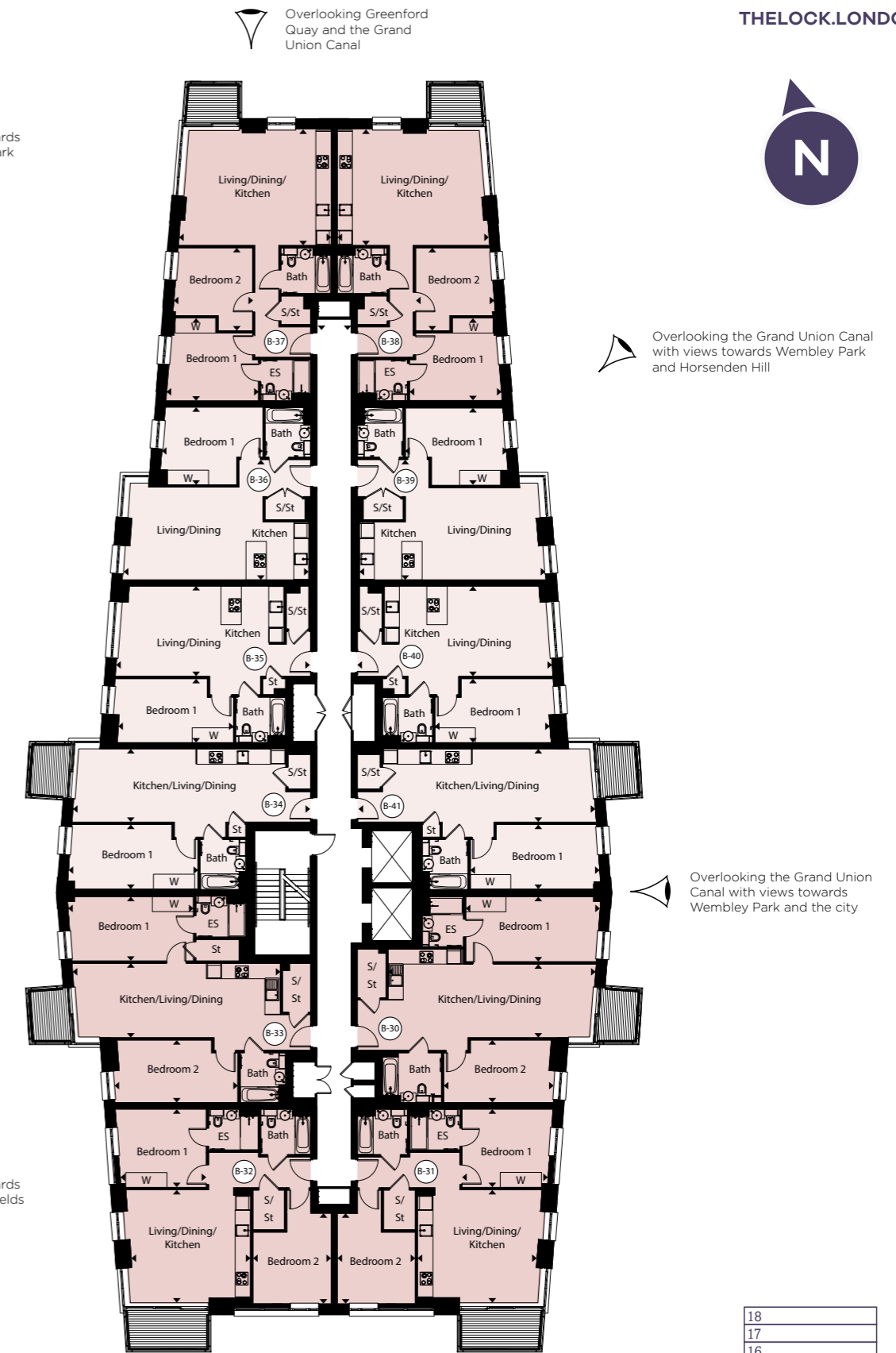
Kitchen/Living/Dining	7.90m x 4.05m	26'1" x 13'3"
Bedroom 1	4.40m x 3.40m	14'5" x 11'2"
<b>Total Area</b>	<b>56.00 sq. m.</b>	<b>602.80 sq. ft.</b>

### Apartment B-40

Kitchen/Living/Dining	7.30m x 4.00m	24'0" x 13'0"
Bedroom 1	5.30m x 2.80m	17'5" x 9'3"
<b>Total Area</b>	<b>55.60 sq. m.</b>	<b>598.50 sq. ft.</b>

### Apartment B-41

Kitchen/Living/Dining	9.30m x 3.20m	30'6" x 10'7"
Bedroom 1	5.65m x 2.80m	18'7" x 9'3"
<b>Total Area</b>	<b>56.00 sq. m.</b>	<b>598.50 sq. ft.</b>



**KEY:**  
 ES – En suite S – Services  
 St – Storage W – Wardrobe

18	
17	
16	
15	
14	
13	
12	
11	
10	
09	
08	
07	
06	
05	
04	
03	
02	
01	
UG	

Floorplan shown is indicative only. The layouts are for indicative purposes only. The developer reserves the right to make changes to these plans prior to exchange of contracts. For exact plot specification, details of external and internal finishes, dimensions and floorplan differences, please speak to a Sales Consultant for more details. The dimensions given are accurate to within plus or minus two inches (50mm) from floor level and include wardrobe spaces where applicable. They are not intended to be used for carpet sizes, appliance space or items of furniture. The information is for general guidance only.



Overlooking the Grand Union Canal with views towards Wembley Park and Horsenden Hill

Overlooking the Grand Union Canal with views towards Wembley Park and the city

# Fourth Floor

## Block B

### Apartment B-42

Kitchen/Living/Dining	9.05m x 3.20m	29'8" x 10'8"
Bedroom 1	5.80m x 2.90m	19'2" x 9'5"
Bedroom 2	4.90m x 2.75m	16'1" x 9'0"
<b>Total Area</b>	<b>80.80 sq. m.</b>	<b>869.70 sq. ft.</b>

### Apartment B-43

Kitchen/Living/Dining	5.20m x 5.00m	17'3" x 16'5"
Bedroom 1	3.90m x 3.45m	12'7" x 11'7"
Bedroom 2	4.00m x 3.40m	13'1" x 11'3"
<b>Total Area</b>	<b>74.50 sq. m.</b>	<b>801.90 sq. ft.</b>

### Apartment B-44

Kitchen/Living/Dining	5.20m x 5.00m	17'3" x 16'5"
Bedroom 1	3.90m x 3.45m	12'7" x 11'7"
Bedroom 2	4.00m x 3.40m	13'1" x 11'3"
<b>Total Area</b>	<b>74.50 sq. m.</b>	<b>801.90 sq. ft.</b>

### Apartment B-45

Kitchen/Living/Dining	9.05m x 3.30m	29'8" x 10'9"
Bedroom 1	5.50m x 2.80m	17'11" x 9'4"
Bedroom 2	5.50m x 2.75m	18'0" x 9'0"
<b>Total Area</b>	<b>79.00 sq. m.</b>	<b>850.30 sq. ft.</b>

### Apartment B-46

Kitchen/Living/Dining	9.30m x 3.20m	30'6" x 10'7"
Bedroom 1	5.60m x 2.80m	18'6" x 9'4"
<b>Total Area</b>	<b>56.00 sq. m.</b>	<b>602.80 sq. ft.</b>

### Apartment B-47

Kitchen/Living/Dining	7.30m x 4.00m	24'0" x 13'0"
Bedroom 1	5.30m x 2.80m	17'4" x 9'3"
<b>Total Area</b>	<b>55.60 sq. m.</b>	<b>598.50 sq. ft.</b>

### Apartment B-48

Kitchen/Living/Dining	7.90m x 4.10m	26'0" x 13'4"
Bedroom 1	4.40m x 3.40m	14'5" x 11'2"
<b>Total Area</b>	<b>56.10 sq. m.</b>	<b>603.90 sq. ft.</b>

### Apartment B-49

Kitchen/Living/Dining	6.50m x 5.10m	21'4" x 16'9"
Bedroom 1	3.95m x 3.00m	13'0" x 9'9"
Bedroom 2	3.60m x 3.40m	11'11" x 11'1"
<b>Total Area</b>	<b>76.70 sq. m.</b>	<b>825.60 sq. ft.</b>

### Apartment B-50

Kitchen/Living/Dining	6.50m x 5.10m	21'4" x 16'9"
Bedroom 1	3.95m x 3.00m	13'0" x 9'9"
Bedroom 2	3.60m x 3.40m	11'11" x 11'1"
<b>Total Area</b>	<b>76.60 sq. m.</b>	<b>824.50 sq. ft.</b>

### Apartment B-51

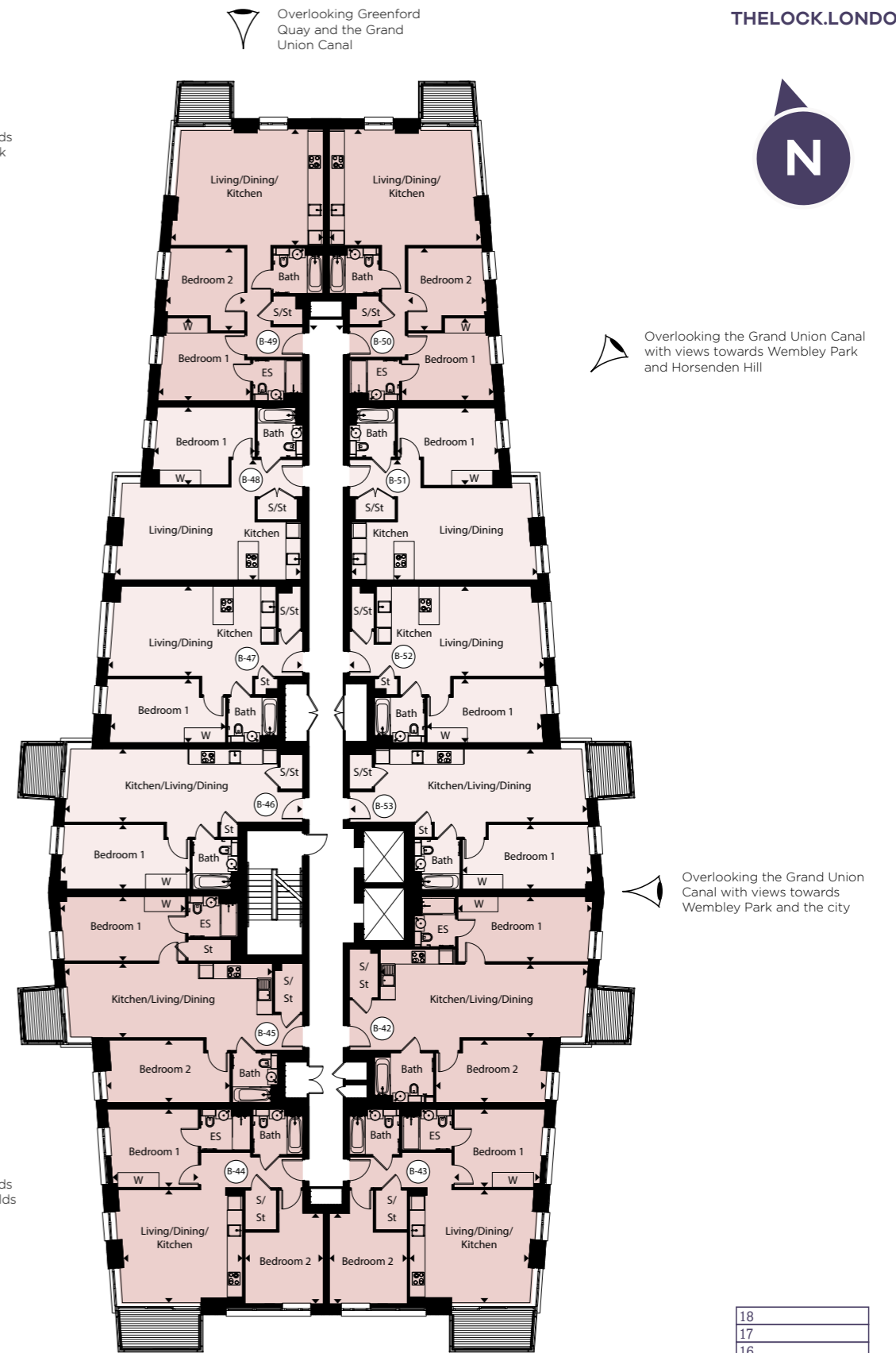
Kitchen/Living/Dining	7.90m x 4.05m	26'1" x 13'3"
Bedroom 1	4.40m x 3.40m	14'5" x 11'2"
<b>Total Area</b>	<b>56.00 sq. m.</b>	<b>602.80 sq. ft.</b>

### Apartment B-52

Kitchen/Living/Dining	7.30m x 4.00m	24'0" x 13'0"
Bedroom 1	5.30m x 2.80m	17'5" x 9'3"
<b>Total Area</b>	<b>55.60 sq. m.</b>	<b>598.50 sq. ft.</b>

### Apartment B-53

Kitchen/Living/Dining	9.30m x 3.20m	30'6" x 10'7"
Bedroom 1	5.65m x 2.80m	18'7" x 9'3"
<b>Total Area</b>	<b>56.00 sq. m.</b>	<b>598.50 sq. ft.</b>



**KEY:**  
 ES – En suite S – Services  
 St – Storage W – Wardrobe

18	
17	
16	
15	
14	
13	
12	
11	
10	
09	
08	
07	
06	
05	
04	
03	
02	
01	
UG	

Floorplan shown is indicative only. The layouts are for indicative purposes only. The developer reserves the right to make changes to these plans prior to exchange of contracts. For exact plot specification, details of external and internal finishes, dimensions and floorplan differences, please speak to a Sales Consultant for more details. The dimensions given are accurate to within plus or minus two inches (50mm) from floor level and include wardrobe spaces where applicable. They are not intended to be used for carpet sizes, appliance space or items of furniture. The information is for general guidance only.





# Fifth Floor

## Block B

### Apartment B-54

Kitchen/Living/Dining	9.05m x 3.20m	29'8" x 10'8"
Bedroom 1	5.80m x 2.90m	19'2" x 9'5"
Bedroom 2	4.90m x 2.75m	16'1" x 9'0"
<b>Total Area</b>	<b>80.80 sq. m.</b>	<b>869.70 sq. ft.</b>

### Apartment B-55

Kitchen/Living/Dining	5.20m x 5.00m	17'3" x 16'5"
Bedroom 1	3.90m x 3.45m	12'7" x 11'7"
Bedroom 2	4.00m x 3.40m	13'1" x 11'3"
<b>Total Area</b>	<b>74.50 sq. m.</b>	<b>801.90 sq. ft.</b>

### Apartment B-56

Kitchen/Living/Dining	5.20m x 5.00m	17'3" x 16'5"
Bedroom 1	3.90m x 3.45m	12'7" x 11'7"
Bedroom 2	4.00m x 3.40m	13'1" x 11'3"
<b>Total Area</b>	<b>74.50 sq. m.</b>	<b>801.90 sq. ft.</b>

### Apartment B-57

Kitchen/Living/Dining	9.05m x 3.30m	29'8" x 10'9"
Bedroom 1	5.50m x 2.80m	17'11" x 9'4"
Bedroom 2	5.50m x 2.75m	18'0" x 9'0"
<b>Total Area</b>	<b>79.00 sq. m.</b>	<b>850.30 sq. ft.</b>

### Apartment B-58

Kitchen/Living/Dining	9.30m x 3.20m	30'6" x 10'7"
Bedroom 1	5.60m x 2.80m	18'6" x 9'4"
<b>Total Area</b>	<b>56.00 sq. m.</b>	<b>602.80 sq. ft.</b>

### Apartment B-59

Kitchen/Living/Dining	7.30m x 4.00m	24'0" x 13'0"
Bedroom 1	5.30m x 2.80m	17'4" x 9'3"
<b>Total Area</b>	<b>55.60 sq. m.</b>	<b>598.50 sq. ft.</b>

### Apartment B-60

Kitchen/Living/Dining	7.90m x 4.10m	26'0" x 13'4"
Bedroom 1	4.40m x 3.40m	14'5" x 11'2"
<b>Total Area</b>	<b>56.10 sq. m.</b>	<b>603.90 sq. ft.</b>

### Apartment B-61

Kitchen/Living/Dining	6.50m x 5.10m	21'4" x 16'9"
Bedroom 1	3.95m x 3.00m	13'0" x 9'9"
Bedroom 2	3.60m x 3.40m	11'11" x 11'1"
<b>Total Area</b>	<b>76.70 sq. m.</b>	<b>825.60 sq. ft.</b>

### Apartment B-62

Kitchen/Living/Dining	6.50m x 5.10m	21'4" x 16'9"
Bedroom 1	3.95m x 3.00m	13'0" x 9'9"
Bedroom 2	3.60m x 3.40m	11'11" x 11'1"
<b>Total Area</b>	<b>76.60 sq. m.</b>	<b>824.50 sq. ft.</b>

### Apartment B-63

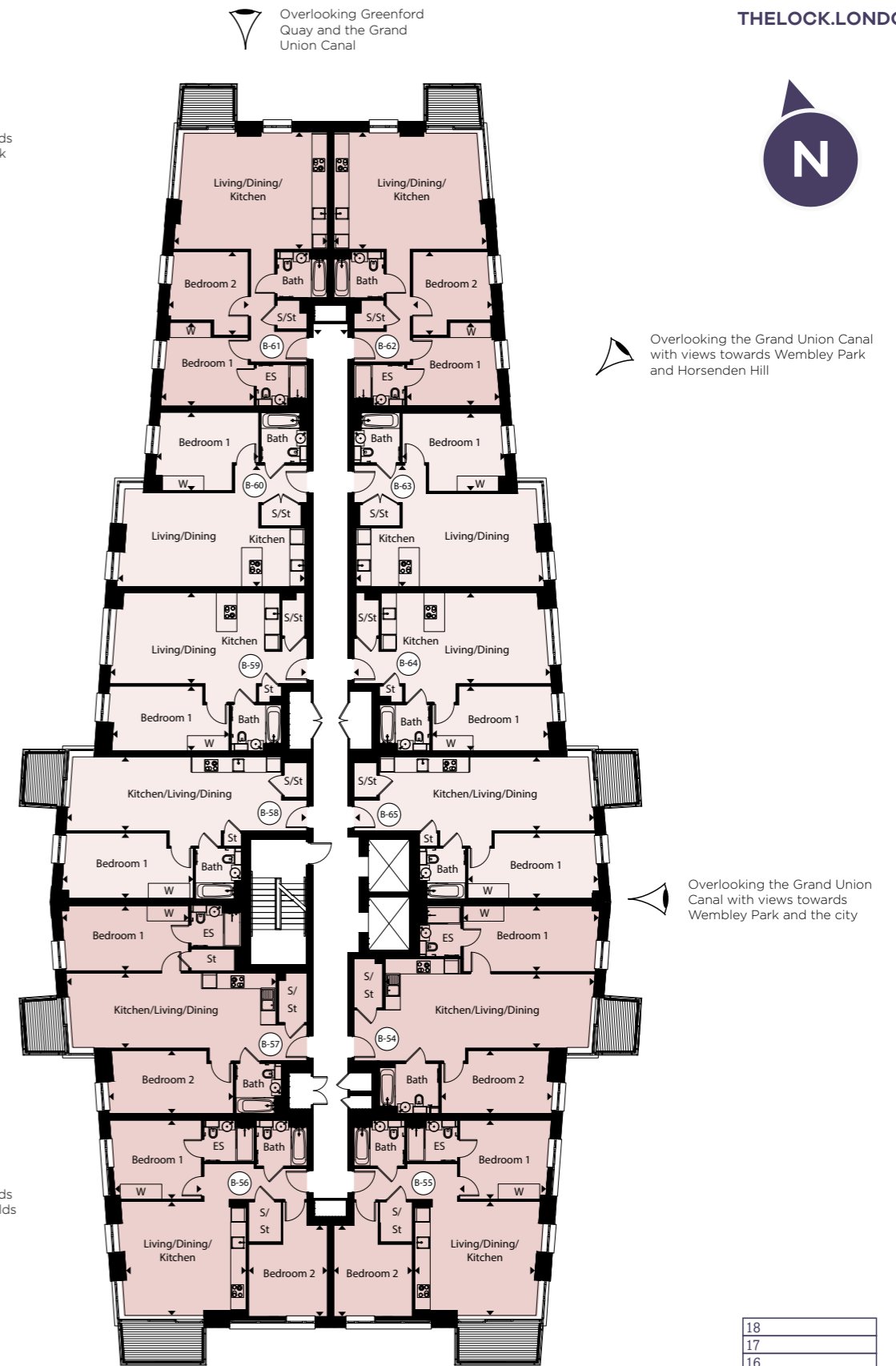
Kitchen/Living/Dining	7.90m x 4.05m	26'1" x 13'3"
Bedroom 1	4.40m x 3.40m	14'5" x 11'2"
<b>Total Area</b>	<b>56.00 sq. m.</b>	<b>602.80 sq. ft.</b>

### Apartment B-64

Kitchen/Living/Dining	7.30m x 4.00m	24'0" x 13'0"
Bedroom 1	5.30m x 2.80m	17'5" x 9'3"
<b>Total Area</b>	<b>55.60 sq. m.</b>	<b>598.50 sq. ft.</b>

### Apartment B-65

Kitchen/Living/Dining	9.30m x 3.20m	30'6" x 10'7"
Bedroom 1	5.65m x 2.80m	18'7" x 9'3"
<b>Total Area</b>	<b>56.00 sq. m.</b>	<b>598.50 sq. ft.</b>



**KEY:**  
 ES – En suite S – Services  
 St – Storage W – Wardrobe

18	
17	
16	
15	
14	
13	
12	
11	
10	
09	
08	
07	
06	
05	
04	
03	
02	
01	
UG	

Floorplan shown is indicative only. The layouts are for indicative purposes only. The developer reserves the right to make changes to these plans prior to exchange of contracts. For exact plot specification, details of external and internal finishes, dimensions and floorplan differences, please speak to a Sales Consultant for more details. The dimensions given are accurate to within plus or minus two inches (50mm) from floor level and include wardrobe spaces where applicable. They are not intended to be used for carpet sizes, appliance space or items of furniture. The information is for general guidance only.



# Fifth Floor

## Block A

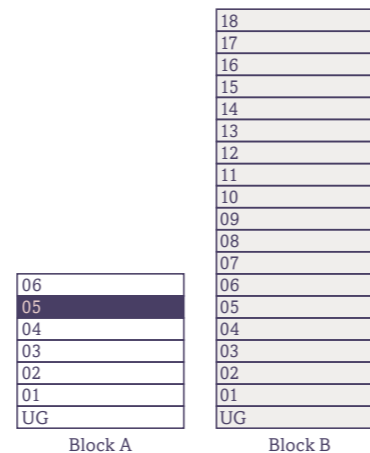


Views towards Northolt Park

Views towards Northala Fields

**KEY:**  
 ES – En suite S – Services  
 St – Storage W – Wardrobe

Floorplan shown is indicative only. The layouts are for indicative purposes only. The developer reserves the right to make changes to these plans prior to exchange of contracts. For exact plot specification, details of external and internal finishes, dimensions and floorplan differences, please speak to a Sales Consultant for more details. The dimensions given are accurate to within plus or minus two inches (50mm) from floor level and include wardrobe spaces where applicable. They are not intended to be used for carpet sizes, appliance space or items of furniture. The information is for general guidance only.



### Apartment A-78

Kitchen/Living/Dining	8.00m x 3.85m	26'4" x 12'8"
Bedroom 1	5.40m x 2.75m	17'10" x 9'0"
Bedroom 2	4.60m x 2.75m	15'3" x 9'0"
Bedroom 3	3.65m x 2.50m	12'0" x 8'4"
<b>Total Area</b>	<b>89.60 sq. m.</b>	<b>964.40 sq. ft.</b>

### Apartment A-79

Kitchen/Living/Dining	6.60m x 4.00m	21'7" x 13'1"
Bedroom 1	5.90m x 2.75m	19'4" x 9'0"
<b>Total Area</b>	<b>56.10 sq. m.</b>	<b>603.90 sq. ft.</b>

### Apartment A-80

Kitchen/Living/Dining	6.60m x 4.00m	21'7" x 13'2"
Bedroom 1	5.90m x 2.75m	19'4" x 9'0"
<b>Total Area</b>	<b>56.30 sq. m.</b>	<b>606.00 sq. ft.</b>

### Apartment A-83

Kitchen/Living/Dining	6.90m x 3.40m	22'7" x 11'2"
Bedroom 1	5.90m x 2.75m	19'4" x 9'0"
<b>Total Area</b>	<b>51.30 sq. m.</b>	<b>552.20 sq. ft.</b>

### Apartment A-84

Kitchen/Living/Dining	6.90m x 3.40m	22'7" x 11'2"
Bedroom 1	5.90m x 2.75m	19'4" x 9'0"
<b>Total Area</b>	<b>51.30 sq. m.</b>	<b>552.20 sq. ft.</b>

### Apartment A-85

Kitchen/Living/Dining	6.90m x 3.40m	22'7" x 11'2"
Bedroom 1	5.90m x 2.75m	19'4" x 9'0"
<b>Total Area</b>	<b>51.30 sq. m.</b>	<b>552.20 sq. ft.</b>

### Apartment A-86

Kitchen/Living/Dining	8.00m x 3.80m	26'6" x 12'7"
Bedroom 1	5.40m x 2.75m	17'10" x 9'0"
Bedroom 2	3.80m x 2.75m	12'7" x 9'0"
Bedroom 3	3.50m x 2.50m	11'8" x 8'4"
<b>Total Area</b>	<b>89.50 sq. m.</b>	<b>963.40 sq. ft.</b>

### Apartment A-89

Kitchen/Living/Dining	6.90m x 3.40m	22'7" x 11'2"
Bedroom 1	5.90m x 2.75m	19'4" x 9'0"
<b>Total Area</b>	<b>51.30 sq. m.</b>	<b>552.20 sq. ft.</b>

# Sixth Floor

## Block B

### Apartment B-66

Kitchen/Living/Dining	9.05m x 3.20m	29'8" x 10'8"
Bedroom 1	5.80m x 2.90m	19'2" x 9'5"
Bedroom 2	4.90m x 2.75m	16'1" x 9'0"
<b>Total Area</b>	<b>80.80 sq. m.</b>	<b>869.70 sq. ft.</b>

### Apartment B-67

Kitchen/Living/Dining	5.20m x 5.00m	17'3" x 16'5"
Bedroom 1	3.90m x 3.45m	12'7" x 11'7"
Bedroom 2	4.00m x 3.40m	13'1" x 11'3"
<b>Total Area</b>	<b>74.50 sq. m.</b>	<b>801.90 sq. ft.</b>

### Apartment B-68

Kitchen/Living/Dining	5.20m x 5.00m	17'3" x 16'5"
Bedroom 1	3.90m x 3.45m	12'7" x 11'7"
Bedroom 2	4.00m x 3.40m	13'1" x 11'3"
<b>Total Area</b>	<b>74.50 sq. m.</b>	<b>801.90 sq. ft.</b>

### Apartment B-69

Kitchen/Living/Dining	9.05m x 3.30m	29'8" x 10'9"
Bedroom 1	5.50m x 2.80m	17'11" x 9'4"
Bedroom 2	5.50m x 2.75m	18'0" x 9'0"
<b>Total Area</b>	<b>79.00 sq. m.</b>	<b>850.30 sq. ft.</b>

### Apartment B-70

Kitchen/Living/Dining	9.30m x 3.20m	30'6" x 10'7"
Bedroom 1	5.60m x 2.80m	18'6" x 9'4"
<b>Total Area</b>	<b>56.00 sq. m.</b>	<b>602.80 sq. ft.</b>

### Apartment B-71

Kitchen/Living/Dining	7.30m x 4.00m	24'0" x 13'0"
Bedroom 1	5.30m x 2.80m	17'4" x 9'3"
<b>Total Area</b>	<b>55.60 sq. m.</b>	<b>598.50 sq. ft.</b>

### Apartment B-72

Kitchen/Living/Dining	7.90m x 4.10m	26'0" x 13'4"
Bedroom 1	4.40m x 3.40m	14'5" x 11'2"
<b>Total Area</b>	<b>56.10 sq. m.</b>	<b>603.90 sq. ft.</b>

### Apartment B-73

Kitchen/Living/Dining	6.50m x 5.10m	21'4" x 16'9"
Bedroom 1	3.95m x 3.00m	13'0" x 9'9"
Bedroom 2	3.60m x 3.40m	11'11" x 11'1"
<b>Total Area</b>	<b>76.70 sq. m.</b>	<b>825.60 sq. ft.</b>

### Apartment B-74

Kitchen/Living/Dining	6.50m x 5.10m	21'4" x 16'9"
Bedroom 1	3.95m x 3.00m	13'0" x 9'9"
Bedroom 2	3.60m x 3.40m	11'11" x 11'1"
<b>Total Area</b>	<b>76.60 sq. m.</b>	<b>824.50 sq. ft.</b>

### Apartment B-75

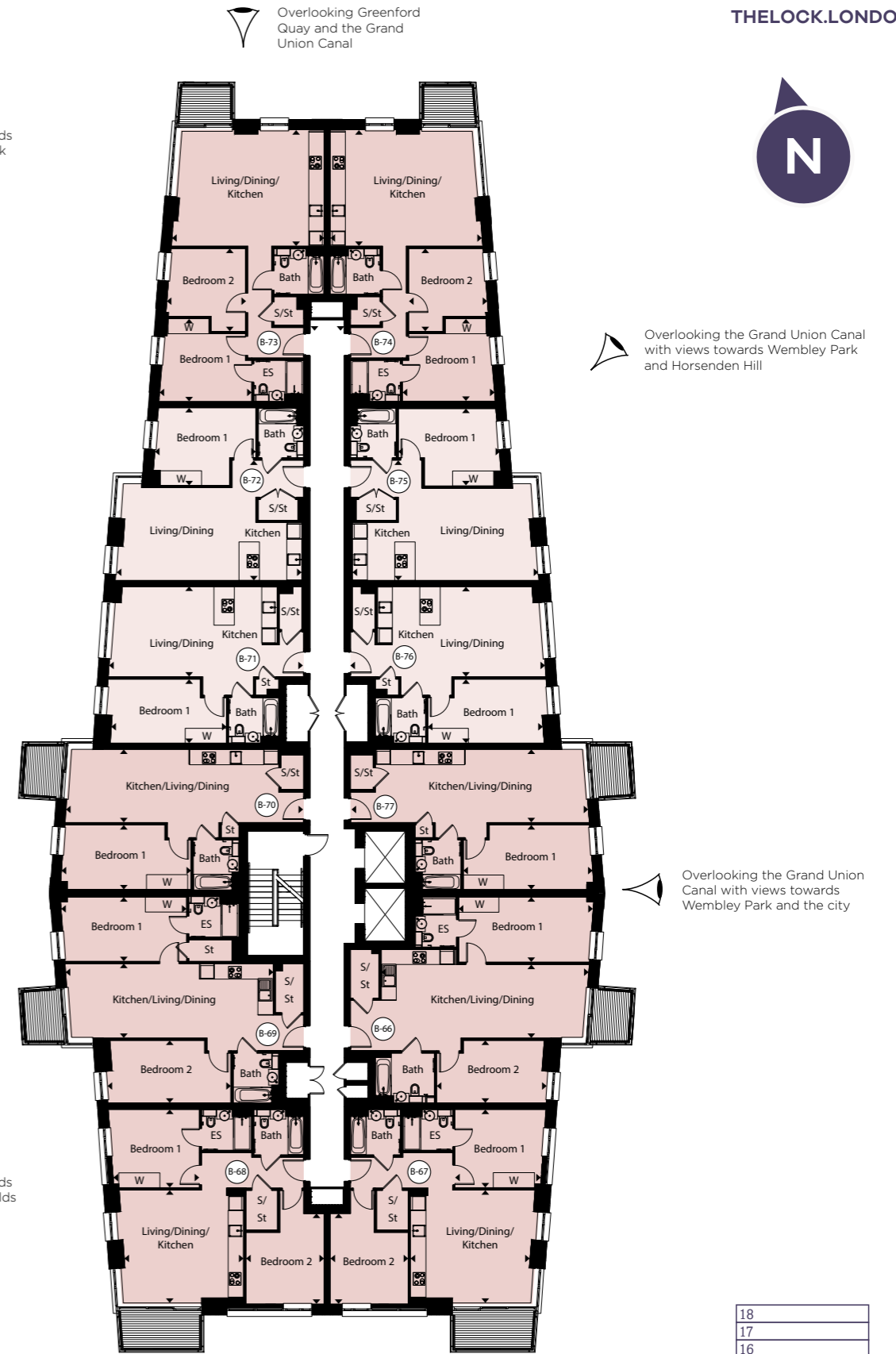
Kitchen/Living/Dining	7.90m x 4.05m	26'1" x 13'3"
Bedroom 1	4.40m x 3.40m	14'5" x 11'2"
<b>Total Area</b>	<b>56.00 sq. m.</b>	<b>602.80 sq. ft.</b>

### Apartment B-76

Kitchen/Living/Dining	7.30m x 4.00m	24'0" x 13'0"
Bedroom 1	5.30m x 2.80m	17'5" x 9'3"
<b>Total Area</b>	<b>55.60 sq. m.</b>	<b>598.50 sq. ft.</b>

### Apartment B-77

Kitchen/Living/Dining	9.30m x 3.20m	30'6" x 10'7"
Bedroom 1	5.65m x 2.80m	18'7" x 9'3"
<b>Total Area</b>	<b>56.00 sq. m.</b>	<b>598.50 sq. ft.</b>



**KEY:**  
 ES – En suite S – Services  
 St – Storage W – Wardrobe

06	06
05	05
04	04
03	03
02	02
01	01
UG	UG

Floorplan shown is indicative only. The layouts are for indicative purposes only. The developer reserves the right to make changes to these plans prior to exchange of contracts. For exact plot specification, details of external and internal finishes, dimensions and floorplan differences, please speak to a Sales Consultant for more details. The dimensions given are accurate to within plus or minus two inches (50mm) from floor level and include wardrobe spaces where applicable. They are not intended to be used for carpet sizes, appliance space or items of furniture. The information is for general guidance only.

# Sixth Floor Block A



Views towards Northolt Park

Views towards Northala Fields

**KEY:**  
ES – En suite S – Services  
St – Storage W – Wardrobe

Floorplan shown is indicative only. The layouts are for indicative purposes only. The developer reserves the right to make changes to these plans prior to exchange of contracts. For exact plot specification, details of external and internal finishes, dimensions and floorplan differences, please speak to a Sales Consultant for more details. The dimensions given are accurate to within plus or minus two inches (50mm) from floor level and include wardrobe spaces where applicable. They are not intended to be used for carpet sizes, appliance space or items of furniture. The information is for general guidance only.

06
05
04
03
02
01
UG

Block A

18
17
16
15
14
13
12
11
10
09
08
07
06
05
04
03
02
01
UG

Block B

## Apartment A-91

Kitchen/Living/Dining	6.90m x 4.00m	22'10" x 13'4"
Bedroom 1	5.60m x 4.20m	18'6" x 13'4"
<b>Total Area</b>	<b>66.90 sq. m.</b>	<b>720.10 sq. ft.</b>

## Apartment A-93

Kitchen/Living/Dining	8.00m x 3.85m	26'4" x 12'8"
Bedroom 1	5.40m x 2.75m	17'10" x 9'0"
Bedroom 2	4.60m x 2.75m	15'3" x 9'0"
Bedroom 3	3.65m x 2.50m	12'0" x 8'4"
<b>Total Area</b>	<b>89.60 sq. m.</b>	<b>954.40 sq. ft.</b>

## Apartment A-94

Kitchen/Living/Dining	6.60m x 4.00m	21'7" x 13'1"
Bedroom 1	5.90m x 2.75m	19'4" x 9'0"
<b>Total Area</b>	<b>56.10 sq. m.</b>	<b>603.90 sq. ft.</b>

## Apartment A-95

Kitchen/Living/Dining	6.60m x 4.00m	21'7" x 13'2"
Bedroom 1	5.90m x 2.75m	19'4" x 9'0"
<b>Total Area</b>	<b>56.30 sq. m.</b>	<b>606.00 sq. ft.</b>

## Apartment A-96

Kitchen/Living/Dining	7.20m x 3.80m	23'7" x 12'5"
Bedroom 1	4.80m x 3.40m	15'8" x 11'3"
Bedroom 2	4.30m x 2.75m	14'0" x 9'0"
<b>Total Area</b>	<b>76.00 sq. m.</b>	<b>818.10 sq. ft.</b>

## Apartment A-97

Kitchen/Living/Dining	8.20m x 3.80m	26'10" x 13'4"
Bedroom 1	5.40m x 2.75m	17'10" x 9'0"
Bedroom 2	5.90m x 2.75m	19'4" x 9'0"
<b>Total Area</b>	<b>76.50 sq. m.</b>	<b>823.40 sq. ft.</b>

## Apartment A-98

Kitchen/Living/Dining	6.90m x 3.40m	22'7" x 11'2"
Bedroom 1	5.90m x 2.75m	19'4" x 9'0"
<b>Total Area</b>	<b>51.30 sq. m.</b>	<b>552.20 sq. ft.</b>

## Apartment A-99

Kitchen/Living/Dining	6.90m x 3.40m	22'7" x 11'2"
Bedroom 1	5.90m x 2.75m	19'4" x 9'0"
<b>Total Area</b>	<b>51.30 sq. m.</b>	<b>552.20 sq. ft.</b>

## Apartment A-100

Kitchen/Living/Dining	6.90m x 3.40m	22'7" x 11'2"
Bedroom 1	5.90m x 2.75m	19'4" x 9'0"
<b>Total Area</b>	<b>51.30 sq. m.</b>	<b>552.20 sq. ft.</b>

## Apartment A-101

Kitchen/Living/Dining	8.00m x 3.80m	26'6" x 12'7"
Bedroom 1	5.40m x 2.75m	17'10" x 9'0"
Bedroom 2	3.80m x 2.75m	12'7" x 9'0"
Bedroom 3	3.50m x 2.50m	11'8" x 8'4"
<b>Total Area</b>	<b>89.50 sq. m.</b>	<b>963.40 sq. ft.</b>

## Apartment A-102

Kitchen/Living/Dining	7.50m x 3.80m	24'6" x 12'7"
Bedroom 1	4.90m x 2.80m	16'3" x 9'1"
Bedroom 2	4.00m x 2.75m	13'2" x 9'0"
<b>Total Area</b>	<b>71.40 sq. m.</b>	<b>768.5 sq. ft.</b>

## Apartment A-103

Kitchen/Living/Dining	6.90m x 3.40m	22'7" x 11'2"
Bedroom 1	5.90m x 2.75m	19'4" x 9'0"
<b>Total Area</b>	<b>51.30 sq. m.</b>	<b>552.20 sq. ft.</b>

## Apartment A-104

Kitchen/Living/Dining	6.90m x 3.40m	22'7" x 11'2"
Bedroom 1	5.90m x 2.75m	19'4" x 9'0"
<b>Total Area</b>	<b>51.30 sq. m.</b>	<b>552.20 sq. ft.</b>

## Apartment A-105

Kitchen/Living/Dining	6.90m x 3.40m	22'7" x 11'2"
Bedroom 1	5.90m x 2.75m	19'4" x 9'0"
<b>Total Area</b>	<b>51.30 sq. m.</b>	<b>552.20 sq. ft.</b>

# Seventh Floor

## Block B

### Apartment B-78

Kitchen/Living/Dining	9.05m x 3.20m	29'8" x 10'8"
Bedroom 1	5.80m x 2.90m	19'2" x 9'5"
Bedroom 2	4.90m x 2.75m	16'1" x 9'0"
<b>Total Area</b>	<b>80.80 sq. m.</b>	<b>869.70 sq. ft.</b>

### Apartment B-79

Kitchen/Living/Dining	5.20m x 5.00m	17'3" x 16'5"
Bedroom 1	3.90m x 3.45m	12'7" x 11'7"
Bedroom 2	4.00m x 3.40m	13'1" x 11'3"
<b>Total Area</b>	<b>74.50 sq. m.</b>	<b>801.90 sq. ft.</b>

### Apartment B-80

Kitchen/Living/Dining	5.20m x 5.00m	17'3" x 16'5"
Bedroom 1	3.90m x 3.45m	12'7" x 11'7"
Bedroom 2	4.00m x 3.40m	13'1" x 11'3"
<b>Total Area</b>	<b>74.50 sq. m.</b>	<b>801.90 sq. ft.</b>

### Apartment B-81

Kitchen/Living/Dining	9.05m x 3.30m	29'8" x 10'9"
Bedroom 1	5.50m x 2.80m	17'11" x 9'4"
Bedroom 2	5.50m x 2.75m	18'0" x 9'0"
<b>Total Area</b>	<b>79.00 sq. m.</b>	<b>850.30 sq. ft.</b>

### Apartment B-82

Kitchen/Living/Dining	9.30m x 3.20m	30'6" x 10'7"
Bedroom 1	5.60m x 2.80m	18'6" x 9'4"
<b>Total Area</b>	<b>56.00 sq. m.</b>	<b>602.80 sq. ft.</b>

### Apartment B-83

Kitchen/Living/Dining	6.00m x 5.80m	19'9" x 18'11"
Bedroom 1	5.30m x 2.75m	17'4" x 9'0"
Bedroom 2	3.90m x 2.75m	12'10" x 9'0"
Bedroom 3	4.70m x 2.75m	15'7" x 9'0"
<b>Total Area</b>	<b>98.00 sq. m.</b>	<b>1,054.90 sq. ft.</b>

### Apartment B-84

Kitchen/Living/Dining	6.00m x 5.80m	19'9" x 18'11"
Bedroom 1	5.30m x 2.75m	17'4" x 9'0"
Bedroom 2	3.90m x 2.75m	12'10" x 9'0"
Bedroom 3	4.70m x 2.75m	15'7" x 9'0"
<b>Total Area</b>	<b>98.00 sq. m.</b>	<b>1,054.90 sq. ft.</b>

### Apartment B-85

Kitchen/Living/Dining	9.30m x 3.20m	30'6" x 10'7"
Bedroom 1	5.60m x 2.80m	18'6" x 9'4"
<b>Total Area</b>	<b>56.00 sq. m.</b>	<b>602.80 sq. ft.</b>

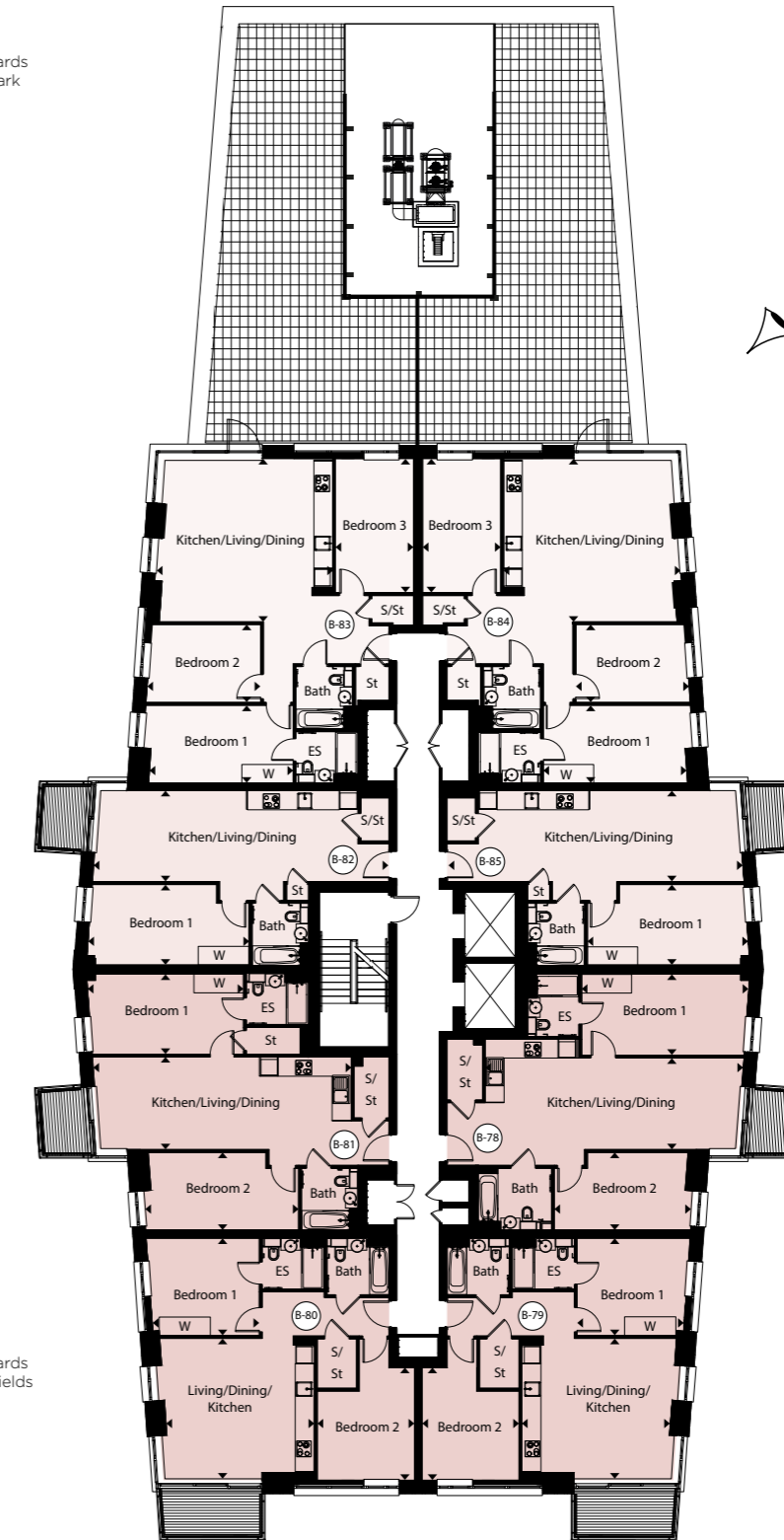
Overlooking Greenford Quay and the Grand Union Canal

THELOCK.LONDON

Views towards Northolt Park

N

Overlooking the Grand Union Canal with views towards Wembley Park and Horsenden Hill



Overlooking the Grand Union Canal with views towards Wembley Park and the city

Views towards Northala Fields

Greenford station

KEY:  
ES – En suite S – Services  
St – Storage W – Wardrobe

18	
17	
16	
15	
14	
13	
12	
11	
10	
09	
08	
07	
06	
05	
04	
03	
02	
01	
UG	

Block A

Block B

Floorplan shown is indicative only. The layouts are for indicative purposes only. The developer reserves the right to make changes to these plans prior to exchange of contracts. For exact plot specification, details of external and internal finishes, dimensions and floorplan differences, please speak to a Sales Consultant for more details. The dimensions given are accurate to within plus or minus two inches (50mm) from floor level and include wardrobe spaces where applicable. They are not intended to be used for carpet sizes, appliance space or items of furniture. The information is for general guidance only.

# Eighth Floor

## Block B

### Apartment B-86

Kitchen/Living/Dining	9.05m x 3.20m	29'8" x 10'8"
Bedroom 1	5.80m x 2.90m	19'2" x 9'5"
Bedroom 2	4.90m x 2.75m	16'1" x 9'0"
<b>Total Area</b>	<b>80.80 sq. m.</b>	<b>869.70 sq. ft.</b>

### Apartment B-87

Kitchen/Living/Dining	5.20m x 5.00m	17'3" x 16'5"
Bedroom 1	3.90m x 3.45m	12'7" x 11'7"
Bedroom 2	4.00m x 3.40m	13'1" x 11'3"
<b>Total Area</b>	<b>74.50 sq. m.</b>	<b>801.90 sq. ft.</b>

### Apartment B-88

Kitchen/Living/Dining	5.20m x 5.00m	17'3" x 16'5"
Bedroom 1	3.90m x 3.45m	12'7" x 11'7"
Bedroom 2	4.00m x 3.40m	13'1" x 11'3"
<b>Total Area</b>	<b>74.50 sq. m.</b>	<b>801.90 sq. ft.</b>

### Apartment B-89

Kitchen/Living/Dining	9.05m x 3.30m	29'8" x 10'9"
Bedroom 1	5.50m x 2.80m	17'11" x 9'4"
Bedroom 2	5.50m x 2.75m	18'0" x 9'0"
<b>Total Area</b>	<b>79.00 sq. m.</b>	<b>850.30 sq. ft.</b>

### Apartment B-90

Kitchen/Living/Dining	9.30m x 3.20m	30'6" x 10'7"
Bedroom 1	5.60m x 2.80m	18'6" x 9'4"
<b>Total Area</b>	<b>56.00 sq. m.</b>	<b>602.80 sq. ft.</b>

### Apartment B-91

Kitchen/Living/Dining	6.00m x 5.80m	19'9" x 18'11"
Bedroom 1	5.30m x 2.75m	17'4" x 9'0"
Bedroom 2	3.90m x 2.75m	12'10" x 9'0"
Bedroom 3	4.70m x 2.75m	15'7" x 9'0"
<b>Total Area</b>	<b>98.00 sq. m.</b>	<b>1,054.90 sq. ft.</b>

### Apartment B-92

Kitchen/Living/Dining	6.00m x 5.80m	19'9" x 18'11"
Bedroom 1	5.30m x 2.75m	17'4" x 9'0"
Bedroom 2	3.90m x 2.75m	12'10" x 9'0"
Bedroom 3	4.70m x 2.75m	15'7" x 9'0"
<b>Total Area</b>	<b>98.00 sq. m.</b>	<b>1,054.90 sq. ft.</b>

### Apartment B-93

Kitchen/Living/Dining	9.30m x 3.20m	30'6" x 10'7"
Bedroom 1	5.60m x 2.80m	18'6" x 9'4"
<b>Total Area</b>	<b>56.00 sq. m.</b>	<b>602.80 sq. ft.</b>

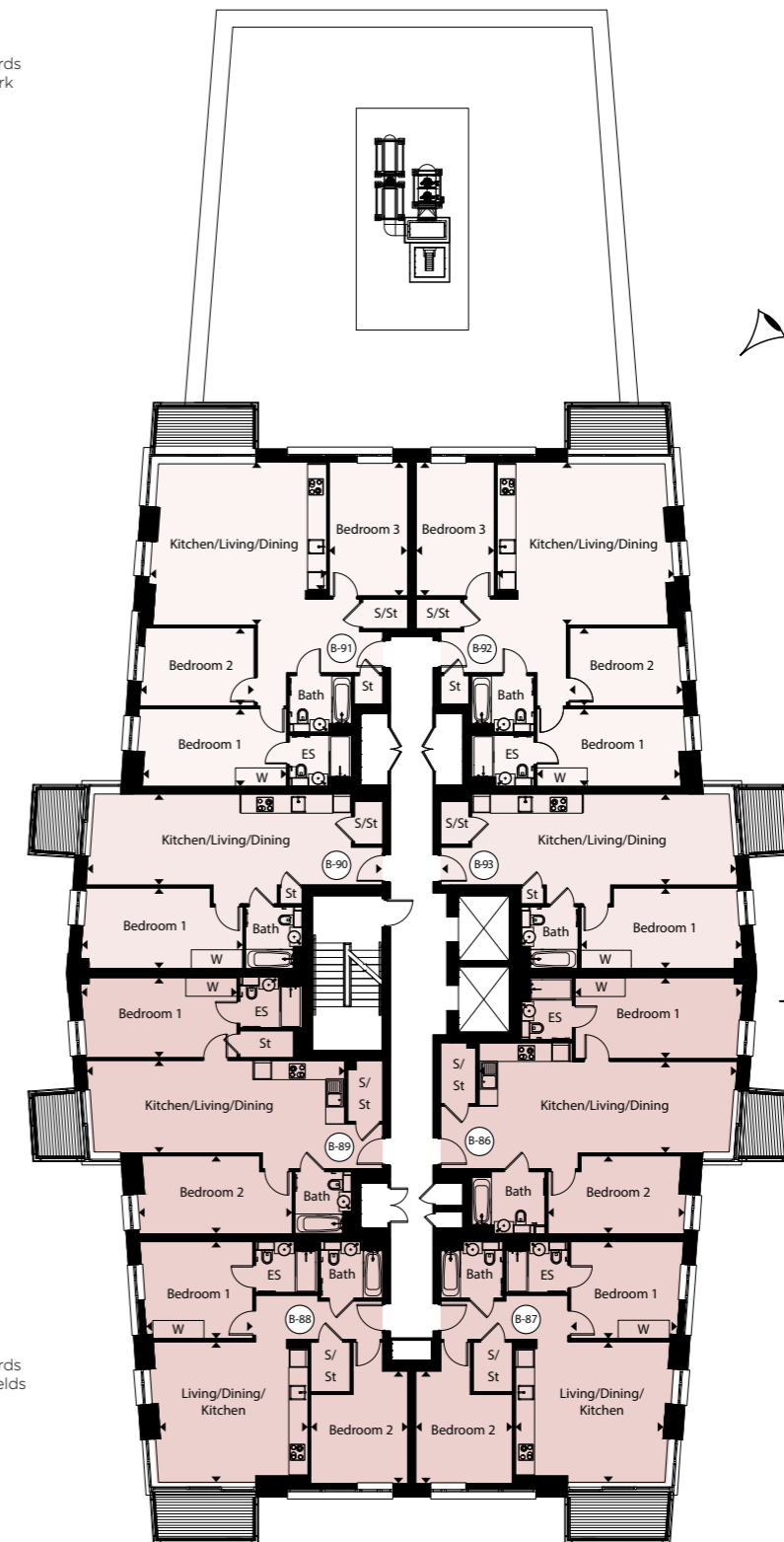
Overlooking Greenford Quay and the Grand Union Canal

THELOCK.LONDON

Views towards Northolt Park

N

Overlooking the Grand Union Canal with views towards Wembley Park and Horsenden Hill



Views towards Northala Fields

Overlooking the Grand Union Canal with views towards Wembley Park and the city

Greenford station

KEY:  
ES – En suite S – Services  
St – Storage W – Wardrobe

18	
17	
16	
15	
14	
13	
12	
11	
10	
09	
08	
07	
06	
05	
04	
03	
02	
01	
UG	

Block A

Block B

Floorplan shown is indicative only. The layouts are for indicative purposes only. The developer reserves the right to make changes to these plans prior to exchange of contracts. For exact plot specification, details of external and internal finishes, dimensions and floorplan differences, please speak to a Sales Consultant for more details. The dimensions given are accurate to within plus or minus two inches (50mm) from floor level and include wardrobe spaces where applicable. They are not intended to be used for carpet sizes, appliance space or items of furniture. The information is for general guidance only.

# Ninth Floor

## Block B

### Apartment B-94

Kitchen/Living/Dining	9.05m x 3.20m	29'8" x 10'8"
Bedroom 1	5.80m x 2.90m	19'2" x 9'5"
Bedroom 2	4.90m x 2.75m	16'1" x 9'0"
<b>Total Area</b>	<b>80.80 sq. m.</b>	<b>869.70 sq. ft.</b>

### Apartment B-95

Kitchen/Living/Dining	5.20m x 5.00m	17'3" x 16'5"
Bedroom 1	3.90m x 3.45m	12'7" x 11'7"
Bedroom 2	4.00m x 3.40m	13'1" x 11'3"
<b>Total Area</b>	<b>74.50 sq. m.</b>	<b>801.90 sq. ft.</b>

### Apartment B-96

Kitchen/Living/Dining	5.20m x 5.00m	17'3" x 16'5"
Bedroom 1	3.90m x 3.45m	12'7" x 11'7"
Bedroom 2	4.00m x 3.40m	13'1" x 11'3"
<b>Total Area</b>	<b>74.50 sq. m.</b>	<b>801.90 sq. ft.</b>

### Apartment B-97

Kitchen/Living/Dining	9.05m x 3.30m	29'8" x 10'9"
Bedroom 1	5.50m x 2.80m	17'11" x 9'4"
Bedroom 2	5.50m x 2.75m	18'0" x 9'0"
<b>Total Area</b>	<b>79.00 sq. m.</b>	<b>850.30 sq. ft.</b>

### Apartment B-98

Kitchen/Living/Dining	9.30m x 3.20m	30'6" x 10'7"
Bedroom 1	5.60m x 2.80m	18'6" x 9'4"
<b>Total Area</b>	<b>56.00 sq. m.</b>	<b>602.80 sq. ft.</b>

### Apartment B-99

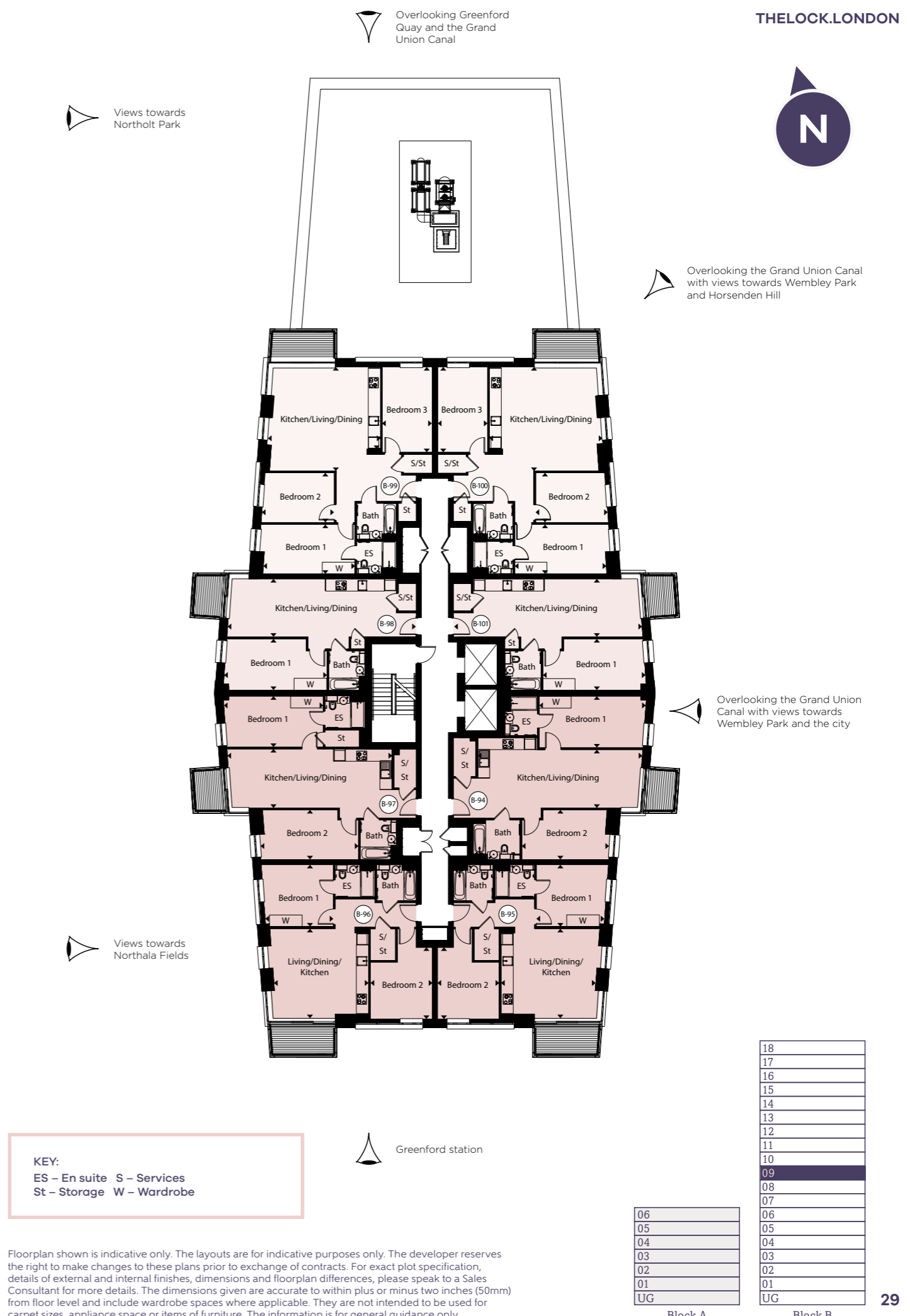
Kitchen/Living/Dining	6.00m x 5.80m	19'9" x 18'11"
Bedroom 1	5.30m x 2.75m	17'4" x 9'0"
Bedroom 2	3.90m x 2.75m	12'10" x 9'0"
Bedroom 3	4.70m x 2.75m	15'7" x 9'0"
<b>Total Area</b>	<b>98.00 sq. m.</b>	<b>1,054.90 sq. ft.</b>

### Apartment B-100

Kitchen/Living/Dining	6.00m x 5.80m	19'9" x 18'11"
Bedroom 1	5.30m x 2.75m	17'4" x 9'0"
Bedroom 2	3.90m x 2.75m	12'10" x 9'0"
Bedroom 3	4.70m x 2.75m	15'7" x 9'0"
<b>Total Area</b>	<b>98.00 sq. m.</b>	<b>1,054.90 sq. ft.</b>

### Apartment B-101

Kitchen/Living/Dining	9.30m x 3.20m	30'6" x 10'7"
Bedroom 1	5.60m x 2.80m	18'6" x 9'4"
<b>Total Area</b>	<b>56.00 sq. m.</b>	<b>602.80 sq. ft.</b>



**KEY:**  
 ES – En suite S – Services  
 St – Storage W – Wardrobe

Floorplan shown is indicative only. The layouts are for indicative purposes only. The developer reserves the right to make changes to these plans prior to exchange of contracts. For exact plot specification, details of external and internal finishes, dimensions and floorplan differences, please speak to a Sales Consultant for more details. The dimensions given are accurate to within plus or minus two inches (50mm) from floor level and include wardrobe spaces where applicable. They are not intended to be used for carpet sizes, appliance space or items of furniture. The information is for general guidance only.

18	
17	
16	
15	
14	
13	
12	
11	
10	
09	
08	
07	
06	
05	
04	
03	
02	
01	
UG	

Block A

Block B

# Tenth Floor

## Block B

### Apartment B-102

Kitchen/Living/Dining	9.05m x 3.20m	29'8" x 10'8"
Bedroom 1	5.80m x 2.90m	19'2" x 9'5"
Bedroom 2	4.90m x 2.75m	16'1" x 9'0"
<b>Total Area</b>	<b>80.80 sq. m.</b>	<b>869.70 sq. ft.</b>

### Apartment B-103

Kitchen/Living/Dining	5.20m x 5.00m	17'3" x 16'5"
Bedroom 1	3.90m x 3.45m	12'7" x 11'7"
Bedroom 2	4.00m x 3.40m	13'1" x 11'3"
<b>Total Area</b>	<b>74.50 sq. m.</b>	<b>801.90 sq. ft.</b>

### Apartment B-104

Kitchen/Living/Dining	5.20m x 5.00m	17'3" x 16'5"
Bedroom 1	3.90m x 3.45m	12'7" x 11'7"
Bedroom 2	4.00m x 3.40m	13'1" x 11'3"
<b>Total Area</b>	<b>74.50 sq. m.</b>	<b>801.90 sq. ft.</b>

### Apartment B-105

Kitchen/Living/Dining	9.05m x 3.30m	29'8" x 10'9"
Bedroom 1	5.50m x 2.80m	17'11" x 9'4"
Bedroom 2	5.50m x 2.75m	18'0" x 9'0"
<b>Total Area</b>	<b>79.00 sq. m.</b>	<b>850.30 sq. ft.</b>

### Apartment B-106

Kitchen/Living/Dining	9.30m x 3.20m	30'6" x 10'7"
Bedroom 1	5.60m x 2.80m	18'6" x 9'4"
<b>Total Area</b>	<b>56.00 sq. m.</b>	<b>602.80 sq. ft.</b>

### Apartment B-107

Kitchen/Living/Dining	6.00m x 5.80m	19'9" x 18'11"
Bedroom 1	5.30m x 2.75m	17'4" x 9'0"
Bedroom 2	3.90m x 2.75m	12'10" x 9'0"
Bedroom 3	4.70m x 2.75m	15'7" x 9'0"
<b>Total Area</b>	<b>98.00 sq. m.</b>	<b>1,054.90 sq. ft.</b>

### Apartment B-108

Kitchen/Living/Dining	6.00m x 5.80m	19'9" x 18'11"
Bedroom 1	5.30m x 2.75m	17'4" x 9'0"
Bedroom 2	3.90m x 2.75m	12'10" x 9'0"
Bedroom 3	4.70m x 2.75m	15'7" x 9'0"
<b>Total Area</b>	<b>98.00 sq. m.</b>	<b>1,054.90 sq. ft.</b>

### Apartment B-109

Kitchen/Living/Dining	9.30m x 3.20m	30'6" x 10'7"
Bedroom 1	5.60m x 2.80m	18'6" x 9'4"
<b>Total Area</b>	<b>56.00 sq. m.</b>	<b>602.80 sq. ft.</b>

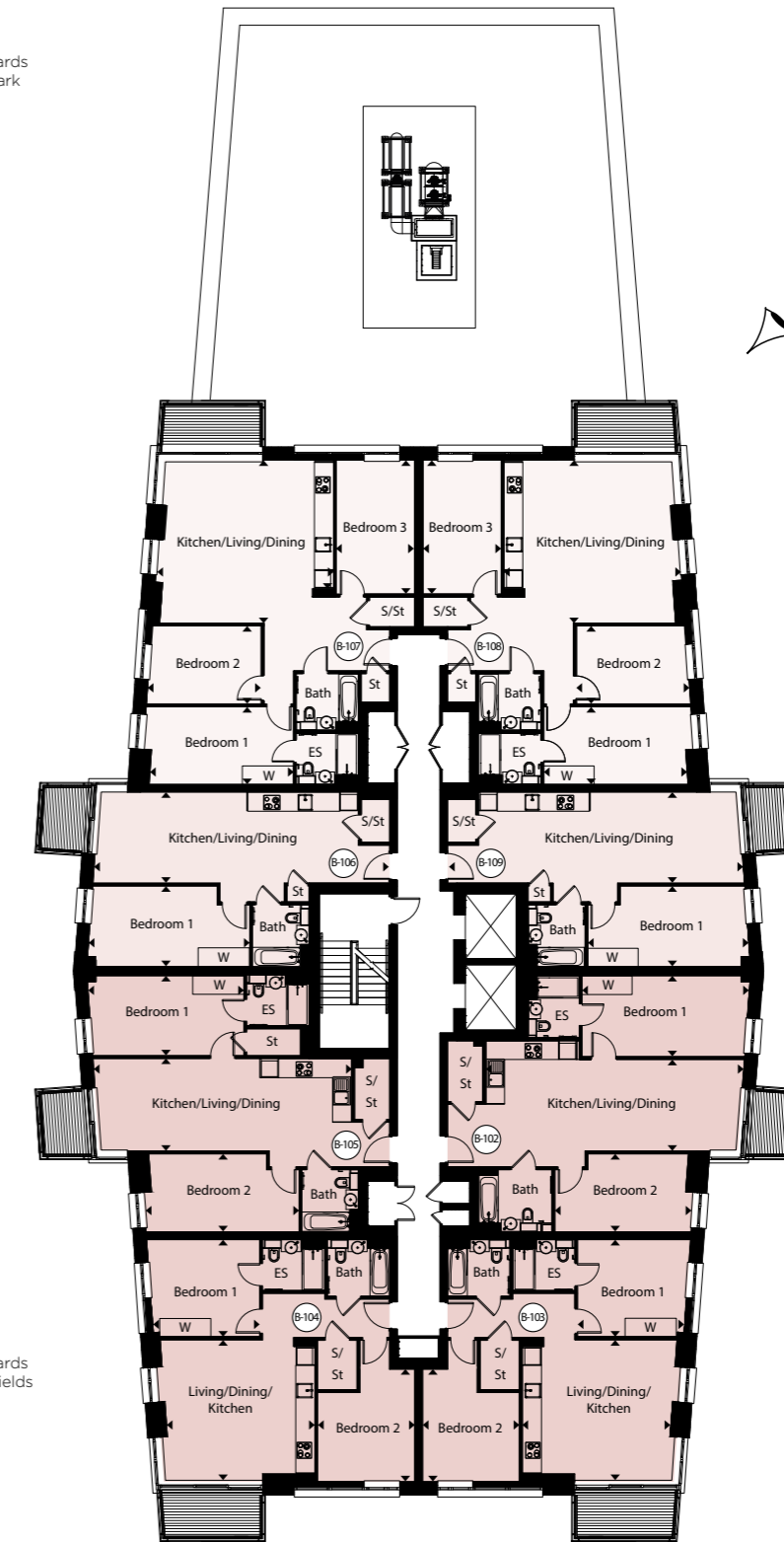
Overlooking Greenford Quay and the Grand Union Canal

THELOCK.LONDON

Views towards Northolt Park



Overlooking the Grand Union Canal with views towards Wembley Park and Horsenden Hill



Overlooking the Grand Union Canal with views towards Wembley Park and the city

Views towards Northala Fields

Greenford station

KEY:  
ES – En suite S – Services  
St – Storage W – Wardrobe

18	
17	
16	
15	
14	
13	
12	
11	
10	
09	
08	
07	
06	
05	
04	
03	
02	
01	
UG	

Block A

Block B

Floorplan shown is indicative only. The layouts are for indicative purposes only. The developer reserves the right to make changes to these plans prior to exchange of contracts. For exact plot specification, details of external and internal finishes, dimensions and floorplan differences, please speak to a Sales Consultant for more details. The dimensions given are accurate to within plus or minus two inches (50mm) from floor level and include wardrobe spaces where applicable. They are not intended to be used for carpet sizes, appliance space or items of furniture. The information is for general guidance only.



# Eleventh Floor

## Block B

### Apartment B-110

Kitchen/Living/Dining	9.05m x 3.20m	29'8" x 10'8"
Bedroom 1	5.80m x 2.90m	19'2" x 9'5"
Bedroom 2	4.90m x 2.75m	16'1" x 9'0"
<b>Total Area</b>	<b>80.80 sq. m.</b>	<b>869.70 sq. ft.</b>

### Apartment B-111

Kitchen/Living/Dining	5.20m x 5.00m	17'3" x 16'5"
Bedroom 1	3.90m x 3.45m	12'7" x 11'7"
Bedroom 2	4.00m x 3.40m	13'1" x 11'3"
<b>Total Area</b>	<b>74.50 sq. m.</b>	<b>801.90 sq. ft.</b>

### Apartment B-112

Kitchen/Living/Dining	5.20m x 5.00m	17'3" x 16'5"
Bedroom 1	3.90m x 3.45m	12'7" x 11'7"
Bedroom 2	4.00m x 3.40m	13'1" x 11'3"
<b>Total Area</b>	<b>74.50 sq. m.</b>	<b>801.90 sq. ft.</b>

### Apartment B-113

Kitchen/Living/Dining	9.05m x 3.30m	29'8" x 10'9"
Bedroom 1	5.50m x 2.80m	17'11" x 9'4"
Bedroom 2	5.50m x 2.75m	18'0" x 9'0"
<b>Total Area</b>	<b>79.00 sq. m.</b>	<b>850.30 sq. ft.</b>

### Apartment B-114

Kitchen/Living/Dining	9.30m x 3.20m	30'6" x 10'7"
Bedroom 1	5.60m x 2.80m	18'6" x 9'4"
<b>Total Area</b>	<b>56.00 sq. m.</b>	<b>602.80 sq. ft.</b>

### Apartment B-115

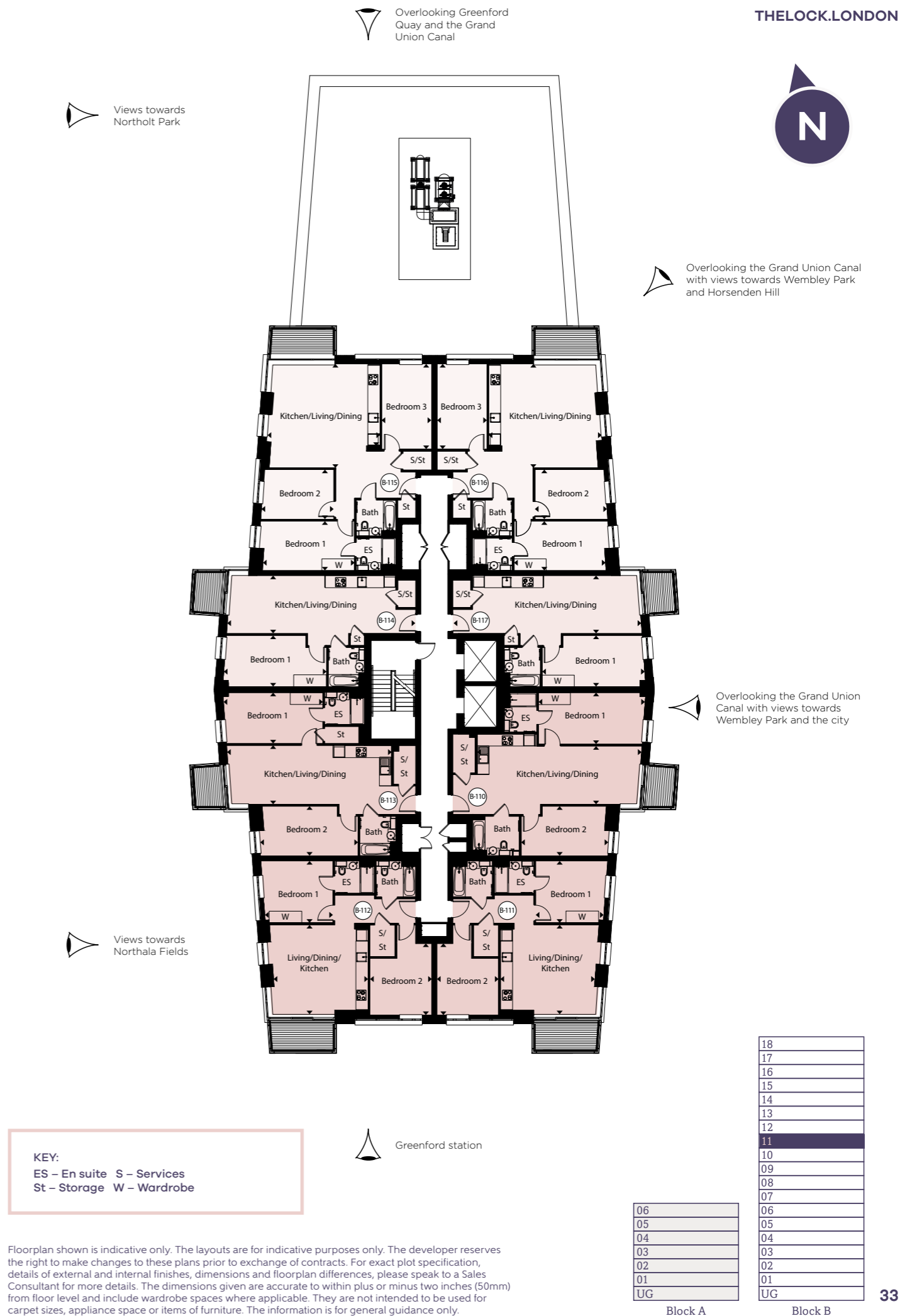
Kitchen/Living/Dining	6.00m x 5.80m	19'9" x 18'11"
Bedroom 1	5.30m x 2.75m	17'4" x 9'0"
Bedroom 2	3.90m x 2.75m	12'10" x 9'0"
Bedroom 3	4.70m x 2.75m	15'7" x 9'0"
<b>Total Area</b>	<b>98.00 sq. m.</b>	<b>1,054.90 sq. ft.</b>

### Apartment B-116

Kitchen/Living/Dining	6.00m x 5.80m	19'9" x 18'11"
Bedroom 1	5.30m x 2.75m	17'4" x 9'0"
Bedroom 2	3.90m x 2.75m	12'10" x 9'0"
Bedroom 3	4.70m x 2.75m	15'7" x 9'0"
<b>Total Area</b>	<b>98.00 sq. m.</b>	<b>1,054.90 sq. ft.</b>

### Apartment B-117

Kitchen/Living/Dining	9.30m x 3.20m	30'6" x 10'7"
Bedroom 1	5.60m x 2.80m	18'6" x 9'4"
<b>Total Area</b>	<b>56.00 sq. m.</b>	<b>602.80 sq. ft.</b>



Floorplan shown is indicative only. The layouts are for indicative purposes only. The developer reserves the right to make changes to these plans prior to exchange of contracts. For exact plot specification, details of external and internal finishes, dimensions and floorplan differences, please speak to a Sales Consultant for more details. The dimensions given are accurate to within plus or minus two inches (50mm) from floor level and include wardrobe spaces where applicable. They are not intended to be used for carpet sizes, appliance space or items of furniture. The information is for general guidance only.

# Twelfth Floor

## Block B

### Apartment B-118

Kitchen/Living/Dining	9.05m x 3.20m	29'8" x 10'8"
Bedroom 1	5.80m x 2.90m	19'2" x 9'5"
Bedroom 2	4.90m x 2.75m	16'1" x 9'0"
<b>Total Area</b>	<b>80.80 sq. m.</b>	<b>869.70 sq. ft.</b>

### Apartment B-119

Kitchen/Living/Dining	5.20m x 5.00m	17'3" x 16'5"
Bedroom 1	3.90m x 3.45m	12'7" x 11'7"
Bedroom 2	4.00m x 3.40m	13'1" x 11'3"
<b>Total Area</b>	<b>74.50 sq. m.</b>	<b>801.90 sq. ft.</b>

### Apartment B-120

Kitchen/Living/Dining	5.20m x 5.00m	17'3" x 16'5"
Bedroom 1	3.90m x 3.45m	12'7" x 11'7"
Bedroom 2	4.00m x 3.40m	13'1" x 11'3"
<b>Total Area</b>	<b>74.50 sq. m.</b>	<b>801.90 sq. ft.</b>

### Apartment B-121

Kitchen/Living/Dining	9.05m x 3.30m	29'8" x 10'9"
Bedroom 1	5.50m x 2.80m	17'11" x 9'4"
Bedroom 2	5.50m x 2.75m	18'0" x 9'0"
<b>Total Area</b>	<b>79.00 sq. m.</b>	<b>850.30 sq. ft.</b>

### Apartment B-122

Kitchen/Living/Dining	9.30m x 3.20m	30'6" x 10'7"
Bedroom 1	5.60m x 2.80m	18'6" x 9'4"
<b>Total Area</b>	<b>56.00 sq. m.</b>	<b>602.80 sq. ft.</b>

### Apartment B-123

Kitchen/Living/Dining	6.00m x 5.80m	19'9" x 18'11"
Bedroom 1	5.30m x 2.75m	17'4" x 9'0"
Bedroom 2	3.90m x 2.75m	12'10" x 9'0"
Bedroom 3	4.70m x 2.75m	15'7" x 9'0"
<b>Total Area</b>	<b>98.00 sq. m.</b>	<b>1,054.90 sq. ft.</b>

### Apartment B-124

Kitchen/Living/Dining	6.00m x 5.80m	19'9" x 18'11"
Bedroom 1	5.30m x 2.75m	17'4" x 9'0"
Bedroom 2	3.90m x 2.75m	12'10" x 9'0"
Bedroom 3	4.70m x 2.75m	15'7" x 9'0"
<b>Total Area</b>	<b>98.00 sq. m.</b>	<b>1,054.90 sq. ft.</b>

### Apartment B-125

Kitchen/Living/Dining	9.30m x 3.20m	30'6" x 10'7"
Bedroom 1	5.60m x 2.80m	18'6" x 9'4"
<b>Total Area</b>	<b>56.00 sq. m.</b>	<b>602.80 sq. ft.</b>

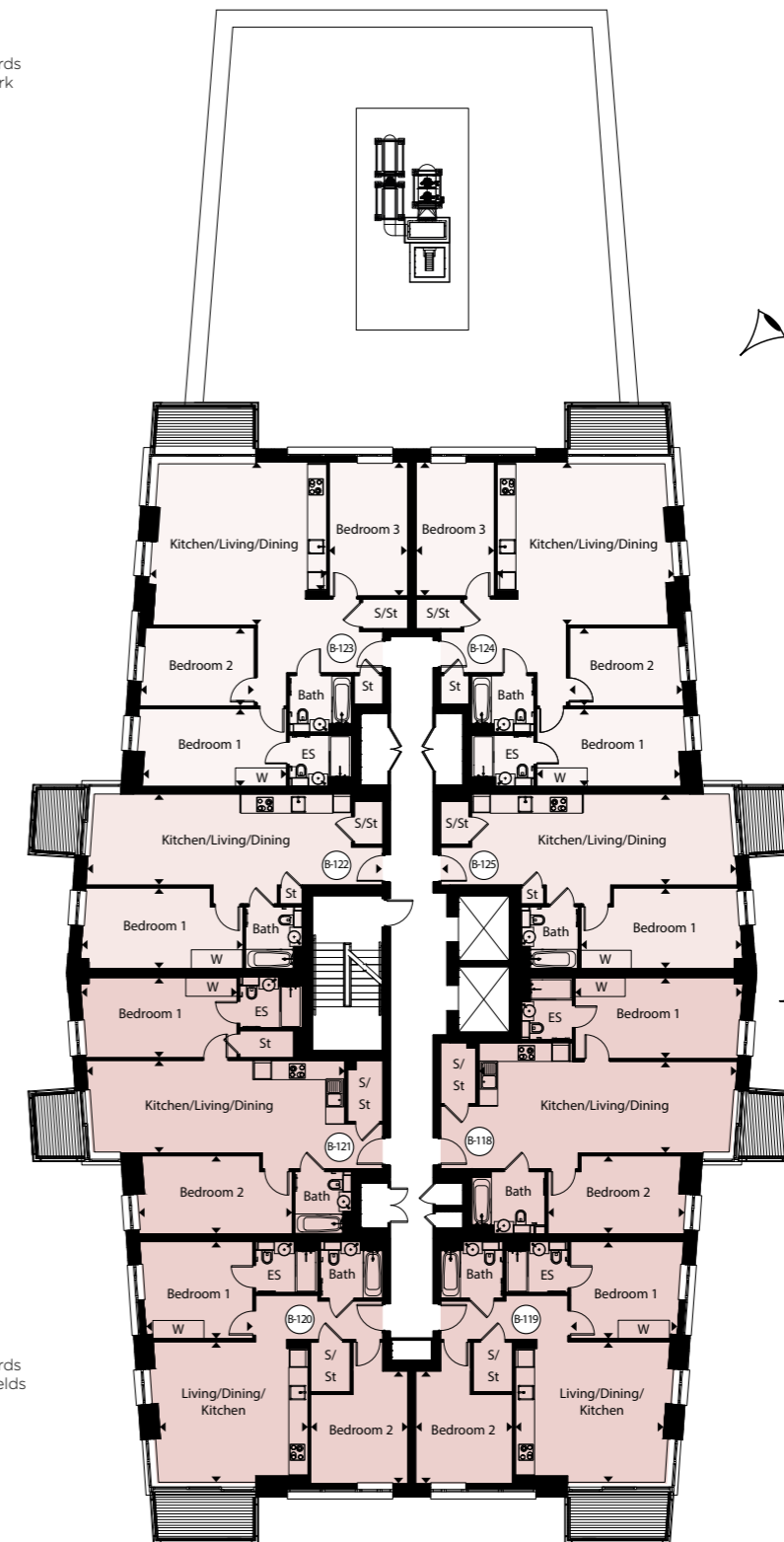
Overlooking Greenford Quay and the Grand Union Canal

THELOCK.LONDON

Views towards Northolt Park



Overlooking the Grand Union Canal with views towards Wembley Park and Horsenden Hill



Overlooking the Grand Union Canal with views towards Wembley Park and the city

Views towards Northala Fields

Greenford station

KEY:  
ES – En suite S – Services  
St – Storage W – Wardrobe

18	
17	
16	
15	
14	
13	
12	
11	
10	
09	
08	
07	
06	
05	
04	
03	
02	
01	
UG	

Block A

Block B

Floorplan shown is indicative only. The layouts are for indicative purposes only. The developer reserves the right to make changes to these plans prior to exchange of contracts. For exact plot specification, details of external and internal finishes, dimensions and floorplan differences, please speak to a Sales Consultant for more details. The dimensions given are accurate to within plus or minus two inches (50mm) from floor level and include wardrobe spaces where applicable. They are not intended to be used for carpet sizes, appliance space or items of furniture. The information is for general guidance only.

# Thirteenth Floor

## Block B

### Apartment B-126

Kitchen/Living/Dining	9.05m x 3.20m	29'8" x 10'8"
Bedroom 1	5.80m x 2.90m	19'2" x 9'5"
Bedroom 2	4.90m x 2.75m	16'1" x 9'0"
<b>Total Area</b>	<b>80.80 sq. m.</b>	<b>869.70 sq. ft.</b>

### Apartment B-127

Kitchen/Living/Dining	5.20m x 5.00m	17'3" x 16'5"
Bedroom 1	3.90m x 3.45m	12'7" x 11'7"
Bedroom 2	4.00m x 3.40m	13'1" x 11'3"
<b>Total Area</b>	<b>74.50 sq. m.</b>	<b>801.90 sq. ft.</b>

### Apartment B-128

Kitchen/Living/Dining	5.20m x 5.00m	17'3" x 16'5"
Bedroom 1	3.90m x 3.45m	12'7" x 11'7"
Bedroom 2	4.00m x 3.40m	13'1" x 11'3"
<b>Total Area</b>	<b>74.50 sq. m.</b>	<b>801.90 sq. ft.</b>

### Apartment B-129

Kitchen/Living/Dining	9.05m x 3.30m	29'8" x 10'9"
Bedroom 1	5.50m x 2.80m	17'11" x 9'4"
Bedroom 2	5.50m x 2.75m	18'0" x 9'0"
<b>Total Area</b>	<b>79.00 sq. m.</b>	<b>850.30 sq. ft.</b>

### Apartment B-130

Kitchen/Living/Dining	9.30m x 3.20m	30'6" x 10'7"
Bedroom 1	5.60m x 2.80m	18'6" x 9'4"
<b>Total Area</b>	<b>56.00 sq. m.</b>	<b>602.80 sq. ft.</b>

### Apartment B-131

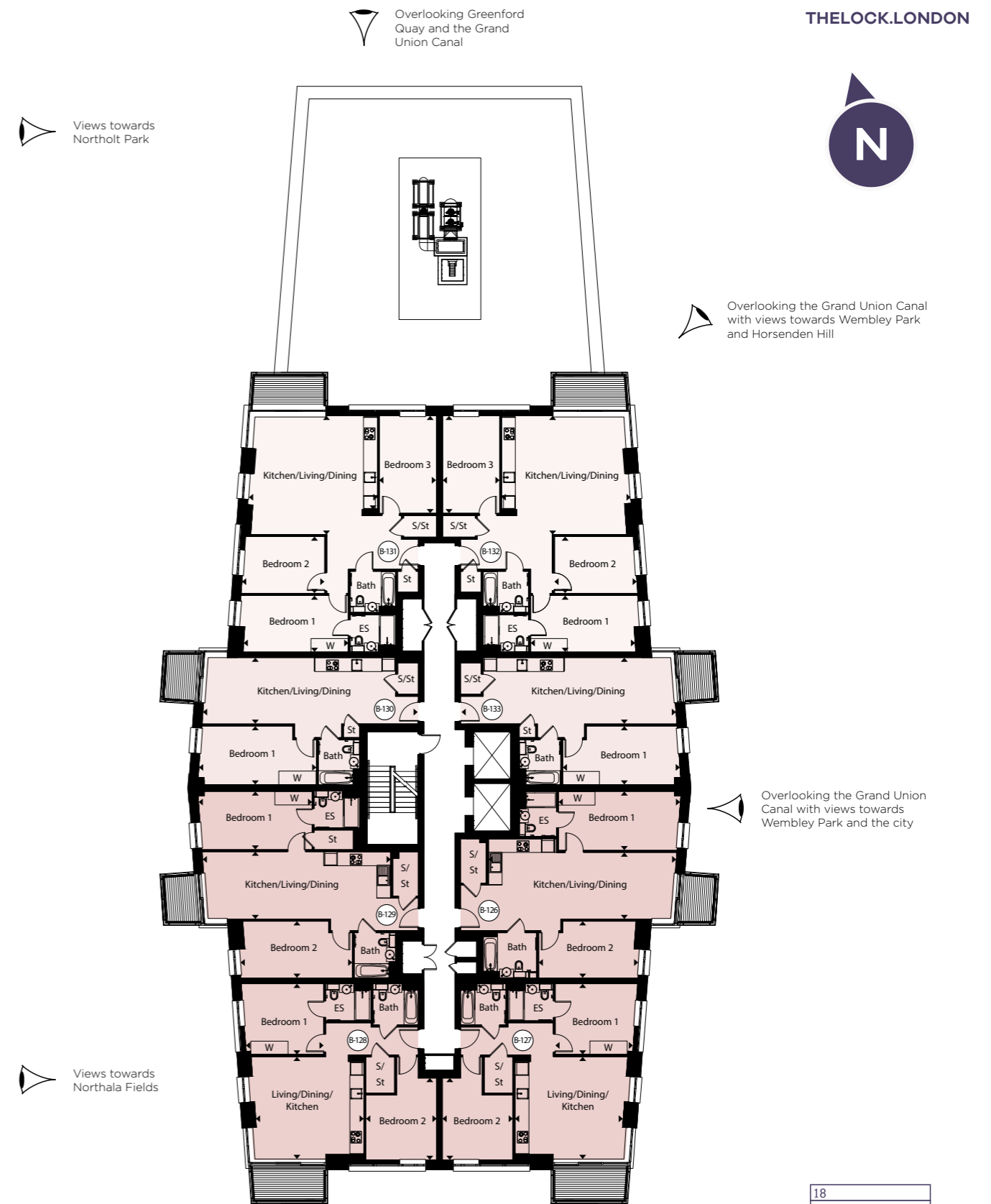
Kitchen/Living/Dining	6.00m x 5.80m	19'9" x 18'11"
Bedroom 1	5.30m x 2.75m	17'4" x 9'0"
Bedroom 2	3.90m x 2.75m	12'10" x 9'0"
Bedroom 3	4.70m x 2.75m	15'7" x 9'0"
<b>Total Area</b>	<b>98.00 sq. m.</b>	<b>1,054.90 sq. ft.</b>

### Apartment B-132

Kitchen/Living/Dining	6.00m x 5.80m	19'9" x 18'11"
Bedroom 1	5.30m x 2.75m	17'4" x 9'0"
Bedroom 2	3.90m x 2.75m	12'10" x 9'0"
Bedroom 3	4.70m x 2.75m	15'7" x 9'0"
<b>Total Area</b>	<b>98.00 sq. m.</b>	<b>1,054.90 sq. ft.</b>

### Apartment B-133

Kitchen/Living/Dining	9.30m x 3.20m	30'6" x 10'7"
Bedroom 1	5.60m x 2.80m	18'6" x 9'4"
<b>Total Area</b>	<b>56.00 sq. m.</b>	<b>602.80 sq. ft.</b>



**KEY:**  
 ES – En suite S – Services  
 St – Storage W – Wardrobe

18	
17	
16	
15	
14	
13	
12	
11	
10	
09	
08	
07	
06	
05	
04	
03	
02	
01	
UG	

Floorplan shown is indicative only. The layouts are for indicative purposes only. The developer reserves the right to make changes to these plans prior to exchange of contracts. For exact plot specification, details of external and internal finishes, dimensions and floorplan differences, please speak to a Sales Consultant for more details. The dimensions given are accurate to within plus or minus two inches (50mm) from floor level and include wardrobe spaces where applicable. They are not intended to be used for carpet sizes, appliance space or items of furniture. The information is for general guidance only.



# Fourteenth Floor

## Block B

### Apartment B-134

Kitchen/Living/Dining	9.05m x 3.20m	29'8" x 10'8"
Bedroom 1	5.80m x 2.90m	19'2" x 9'5"
Bedroom 2	4.90m x 2.75m	16'1" x 9'0"
<b>Total Area</b>	<b>80.80 sq. m.</b>	<b>869.70 sq. ft.</b>

### Apartment B-135

Kitchen/Living/Dining	5.20m x 5.00m	17'3" x 16'5"
Bedroom 1	3.90m x 3.45m	12'7" x 11'7"
Bedroom 2	4.00m x 3.40m	13'1" x 11'3"
<b>Total Area</b>	<b>74.50 sq. m.</b>	<b>801.90 sq. ft.</b>

### Apartment B-136

Kitchen/Living/Dining	5.20m x 5.00m	17'3" x 16'5"
Bedroom 1	3.90m x 3.45m	12'7" x 11'7"
Bedroom 2	4.00m x 3.40m	13'1" x 11'3"
<b>Total Area</b>	<b>74.50 sq. m.</b>	<b>801.90 sq. ft.</b>

### Apartment B-137

Kitchen/Living/Dining	9.05m x 3.30m	29'8" x 10'9"
Bedroom 1	5.50m x 2.80m	17'11" x 9'4"
Bedroom 2	5.50m x 2.75m	18'0" x 9'0"
<b>Total Area</b>	<b>79.00 sq. m.</b>	<b>850.30 sq. ft.</b>

### Apartment B-138

Kitchen/Living/Dining	9.30m x 3.20m	30'6" x 10'7"
Bedroom 1	5.60m x 2.80m	18'6" x 9'4"
<b>Total Area</b>	<b>56.00 sq. m.</b>	<b>602.80 sq. ft.</b>

### Apartment B-139

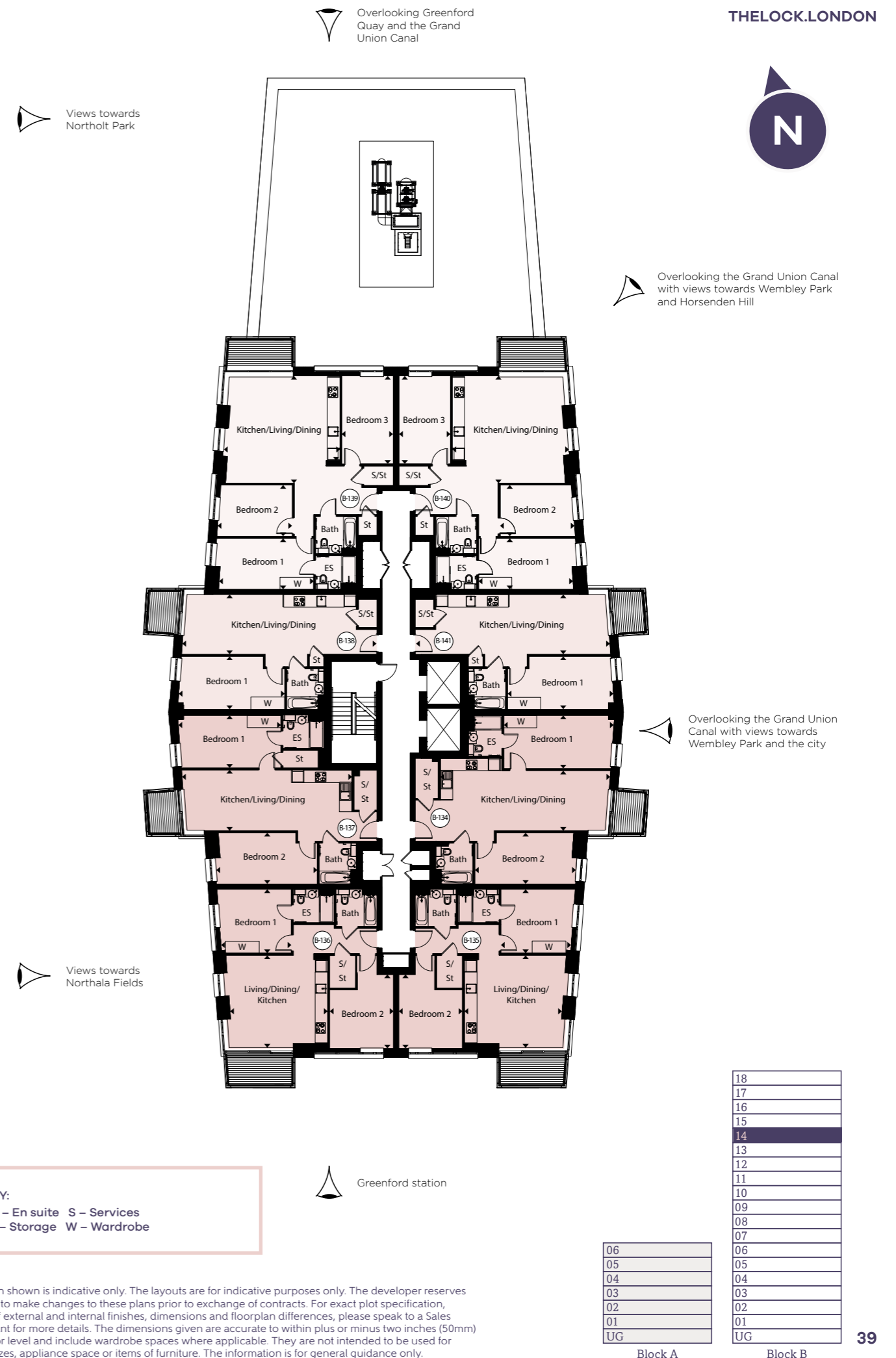
Kitchen/Living/Dining	6.00m x 5.80m	19'9" x 18'11"
Bedroom 1	5.30m x 2.75m	17'4" x 9'0"
Bedroom 2	3.90m x 2.75m	12'10" x 9'0"
Bedroom 3	4.70m x 2.75m	15'7" x 9'0"
<b>Total Area</b>	<b>98.00 sq. m.</b>	<b>1,054.90 sq. ft.</b>

### Apartment B-140

Kitchen/Living/Dining	6.00m x 5.80m	19'9" x 18'11"
Bedroom 1	5.30m x 2.75m	17'4" x 9'0"
Bedroom 2	3.90m x 2.75m	12'10" x 9'0"
Bedroom 3	4.70m x 2.75m	15'7" x 9'0"
<b>Total Area</b>	<b>98.00 sq. m.</b>	<b>1,054.90 sq. ft.</b>

### Apartment B-141

Kitchen/Living/Dining	9.30m x 3.20m	30'6" x 10'7"
Bedroom 1	5.60m x 2.80m	18'6" x 9'4"
<b>Total Area</b>	<b>56.00 sq. m.</b>	<b>602.80 sq. ft.</b>



Floorplan shown is indicative only. The layouts are for indicative purposes only. The developer reserves the right to make changes to these plans prior to exchange of contracts. For exact plot specification, details of external and internal finishes, dimensions and floorplan differences, please speak to a Sales Consultant for more details. The dimensions given are accurate to within plus or minus two inches (50mm) from floor level and include wardrobe spaces where applicable. They are not intended to be used for carpet sizes, appliance space or items of furniture. The information is for general guidance only.

# Fifteenth Floor

## Block B

### Apartment B-142

Kitchen/Living/Dining	9.05m x 3.20m	29'8" x 10'8"
Bedroom 1	5.80m x 2.90m	19'2" x 9'5"
Bedroom 2	4.90m x 2.75m	16'1" x 9'0"
<b>Total Area</b>	<b>80.80 sq. m.</b>	<b>869.70 sq. ft.</b>

### Apartment B-143

Kitchen/Living/Dining	5.20m x 5.00m	17'3" x 16'5"
Bedroom 1	3.90m x 3.45m	12'7" x 11'7"
Bedroom 2	4.00m x 3.40m	13'1" x 11'3"
<b>Total Area</b>	<b>74.50 sq. m.</b>	<b>801.90 sq. ft.</b>

### Apartment B-144

Kitchen/Living/Dining	5.20m x 5.00m	17'3" x 16'5"
Bedroom 1	3.90m x 3.45m	12'7" x 11'7"
Bedroom 2	4.00m x 3.40m	13'1" x 11'3"
<b>Total Area</b>	<b>74.50 sq. m.</b>	<b>801.90 sq. ft.</b>

### Apartment B-145

Kitchen/Living/Dining	9.05m x 3.30m	29'8" x 10'9"
Bedroom 1	5.50m x 2.80m	17'11" x 9'4"
Bedroom 2	5.50m x 2.75m	18'0" x 9'0"
<b>Total Area</b>	<b>79.00 sq. m.</b>	<b>850.30 sq. ft.</b>

### Apartment B-146

Kitchen/Living/Dining	9.30m x 3.20m	30'6" x 10'7"
Bedroom 1	5.60m x 2.80m	18'6" x 9'4"
<b>Total Area</b>	<b>56.00 sq. m.</b>	<b>602.80 sq. ft.</b>

### Apartment B-147

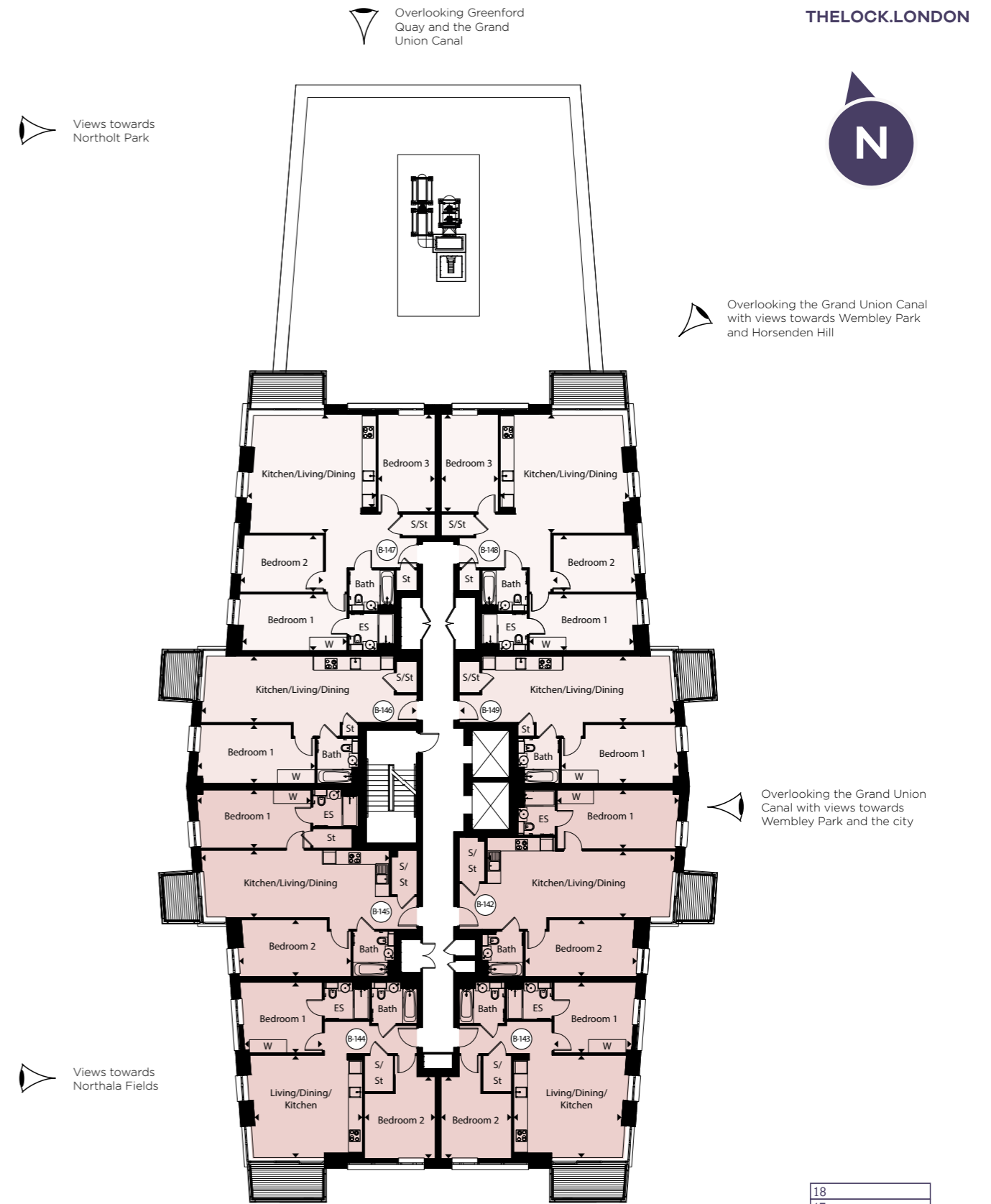
Kitchen/Living/Dining	6.00m x 5.80m	19'9" x 18'11"
Bedroom 1	5.30m x 2.75m	17'4" x 9'0"
Bedroom 2	3.90m x 2.75m	12'10" x 9'0"
Bedroom 3	4.70m x 2.75m	15'7" x 9'0"
<b>Total Area</b>	<b>98.00 sq. m.</b>	<b>1,054.90 sq. ft.</b>

### Apartment B-148

Kitchen/Living/Dining	6.00m x 5.80m	19'9" x 18'11"
Bedroom 1	5.30m x 2.75m	17'4" x 9'0"
Bedroom 2	3.90m x 2.75m	12'10" x 9'0"
Bedroom 3	4.70m x 2.75m	15'7" x 9'0"
<b>Total Area</b>	<b>98.00 sq. m.</b>	<b>1,054.90 sq. ft.</b>

### Apartment B-149

Kitchen/Living/Dining	9.30m x 3.20m	30'6" x 10'7"
Bedroom 1	5.60m x 2.80m	18'6" x 9'4"
<b>Total Area</b>	<b>56.00 sq. m.</b>	<b>602.80 sq. ft.</b>



**KEY:**  
 ES – En suite S – Services  
 St – Storage W – Wardrobe

18	
17	
16	
15	
14	
13	
12	
11	
10	
09	
08	
07	
06	
05	
04	
03	
02	
01	
UG	

Floorplan shown is indicative only. The layouts are for indicative purposes only. The developer reserves the right to make changes to these plans prior to exchange of contracts. For exact plot specification, details of external and internal finishes, dimensions and floorplan differences, please speak to a Sales Consultant for more details. The dimensions given are accurate to within plus or minus two inches (50mm) from floor level and include wardrobe spaces where applicable. They are not intended to be used for carpet sizes, appliance space or items of furniture. The information is for general guidance only.

# Sixteenth Floor

## Block B

### Apartment B-150

Kitchen/Living/Dining	9.05m x 3.20m	29'8" x 10'8"
Bedroom 1	5.80m x 2.90m	19'2" x 9'5"
Bedroom 2	4.90m x 2.75m	16'1" x 9'0"
<b>Total Area</b>	<b>80.80 sq. m.</b>	<b>869.70 sq. ft.</b>

### Apartment B-151

Kitchen/Living/Dining	5.20m x 5.00m	17'3" x 16'5"
Bedroom 1	3.90m x 3.45m	12'7" x 11'7"
Bedroom 2	4.00m x 3.40m	13'1" x 11'3"
<b>Total Area</b>	<b>74.50 sq. m.</b>	<b>801.90 sq. ft.</b>

### Apartment B-152

Kitchen/Living/Dining	5.20m x 5.00m	17'3" x 16'5"
Bedroom 1	3.90m x 3.45m	12'7" x 11'7"
Bedroom 2	4.00m x 3.40m	13'1" x 11'3"
<b>Total Area</b>	<b>74.50 sq. m.</b>	<b>801.90 sq. ft.</b>

### Apartment B-153

Kitchen/Living/Dining	9.05m x 3.30m	29'8" x 10'9"
Bedroom 1	5.50m x 2.80m	17'11" x 9'4"
Bedroom 2	5.50m x 2.75m	18'0" x 9'0"
<b>Total Area</b>	<b>79.00 sq. m.</b>	<b>850.30 sq. ft.</b>

### Apartment B-154

Kitchen/Living/Dining	9.30m x 3.20m	30'6" x 10'7"
Bedroom 1	5.60m x 2.80m	18'6" x 9'4"
<b>Total Area</b>	<b>56.00 sq. m.</b>	<b>602.80 sq. ft.</b>

### Apartment B-155

Kitchen/Living/Dining	6.00m x 5.80m	19'9" x 18'11"
Bedroom 1	5.30m x 2.75m	17'4" x 9'0"
Bedroom 2	3.90m x 2.75m	12'10" x 9'0"
Bedroom 3	4.70m x 2.75m	15'7" x 9'0"
<b>Total Area</b>	<b>98.00 sq. m.</b>	<b>1,054.90 sq. ft.</b>

### Apartment B-156

Kitchen/Living/Dining	6.00m x 5.80m	19'9" x 18'11"
Bedroom 1	5.30m x 2.75m	17'4" x 9'0"
Bedroom 2	3.90m x 2.75m	12'10" x 9'0"
Bedroom 3	4.70m x 2.75m	15'7" x 9'0"
<b>Total Area</b>	<b>98.00 sq. m.</b>	<b>1,054.90 sq. ft.</b>

### Apartment B-157

Kitchen/Living/Dining	9.30m x 3.20m	30'6" x 10'7"
Bedroom 1	5.60m x 2.80m	18'6" x 9'4"
<b>Total Area</b>	<b>56.00 sq. m.</b>	<b>602.80 sq. ft.</b>

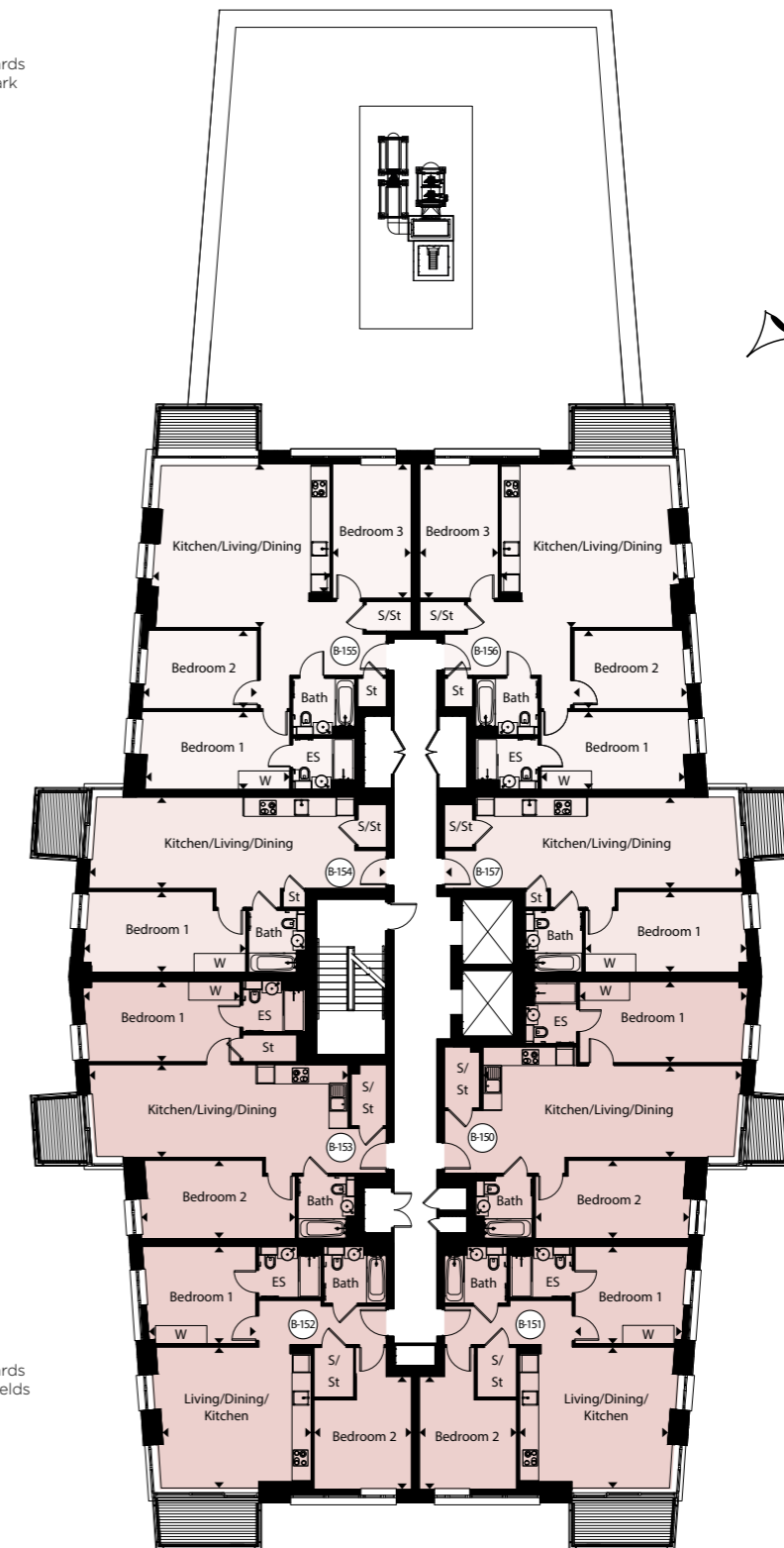
Overlooking Greenford Quay and the Grand Union Canal

THELOCK.LONDON

Views towards Northolt Park



Overlooking the Grand Union Canal with views towards Wembley Park and Horsenden Hill



Views towards Northala Fields

Overlooking the Grand Union Canal with views towards Wembley Park and the city

KEY:  
ES – En suite S – Services  
St – Storage W – Wardrobe

Greenford station

18	
17	
16	
15	
14	
13	
12	
11	
10	
09	
08	
07	
06	
05	
04	
03	
02	
01	
UG	

Block A

Block B

Floorplan shown is indicative only. The layouts are for indicative purposes only. The developer reserves the right to make changes to these plans prior to exchange of contracts. For exact plot specification, details of external and internal finishes, dimensions and floorplan differences, please speak to a Sales Consultant for more details. The dimensions given are accurate to within plus or minus two inches (50mm) from floor level and include wardrobe spaces where applicable. They are not intended to be used for carpet sizes, appliance space or items of furniture. The information is for general guidance only.

# Seventeenth Floor

## Block B

### Apartment B-158

Kitchen/Living/Dining	7.60m x 4.20m	24'11" x 13'9"
Bedroom 1	4.00m x 3.35m	13'3" x 11'0"
<b>Total Area</b>	<b>62.70 sq. m.</b>	<b>674.90 sq. ft.</b>

### Apartment B-159

Kitchen/Living/Dining	5.20m x 5.00m	17'3" x 16'5"
Bedroom 1	3.90m x 3.45m	12'7" x 11'7"
Bedroom 2	4.00m x 3.40m	13'1" x 11'3"
<b>Total Area</b>	<b>74.50 sq. m.</b>	<b>801.90 sq. ft.</b>

### Apartment B-160

Kitchen/Living/Dining	5.20m x 5.00m	17'3" x 16'5"
Bedroom 1	3.90m x 3.45m	12'7" x 11'7"
Bedroom 2	4.00m x 3.40m	13'1" x 11'3"
<b>Total Area</b>	<b>74.50 sq. m.</b>	<b>801.90 sq. ft.</b>

### Apartment B-161

Kitchen/Living/Dining	7.60m x 4.20m	24'11" x 13'9"
Bedroom 1	4.05m x 3.35m	13'4" x 11'0"
<b>Total Area</b>	<b>60.90 sq. m.</b>	<b>655.50 sq. ft.</b>

### Apartment B-162

Kitchen/Living/Dining	6.30m x 4.30m	20'8" x 14'1"
Bedroom 1	5.20m x 3.20m	17'0" x 10'7"
<b>Total Area</b>	<b>56.50 sq. m.</b>	<b>608.20 sq. ft.</b>

### Apartment B-163

Kitchen/Living/Dining	6.00m x 5.80m	19'9" x 18'11"
Bedroom 1	5.30m x 2.75m	17'4" x 9'0"
Bedroom 2	3.90m x 2.75m	12'10" x 9'0"
Bedroom 3	4.70m x 2.75m	15'7" x 9'0"
<b>Total Area</b>	<b>98.00 sq. m.</b>	<b>1,054.90 sq. ft.</b>

### Apartment B-164

Kitchen/Living/Dining	6.00m x 5.80m	19'9" x 18'11"
Bedroom 1	5.30m x 2.75m	17'4" x 9'0"
Bedroom 2	3.90m x 2.75m	12'10" x 9'0"
Bedroom 3	4.70m x 2.75m	15'7" x 9'0"
<b>Total Area</b>	<b>98.00 sq. m.</b>	<b>1,054.90 sq. ft.</b>

### Apartment B-165

Kitchen/Living/Dining	6.30m x 4.30m	20'8" x 14'1"
Bedroom 1	5.20m x 3.20m	17'0" x 10'7"
<b>Total Area</b>	<b>56.50 sq. m.</b>	<b>608.20 sq. ft.</b>

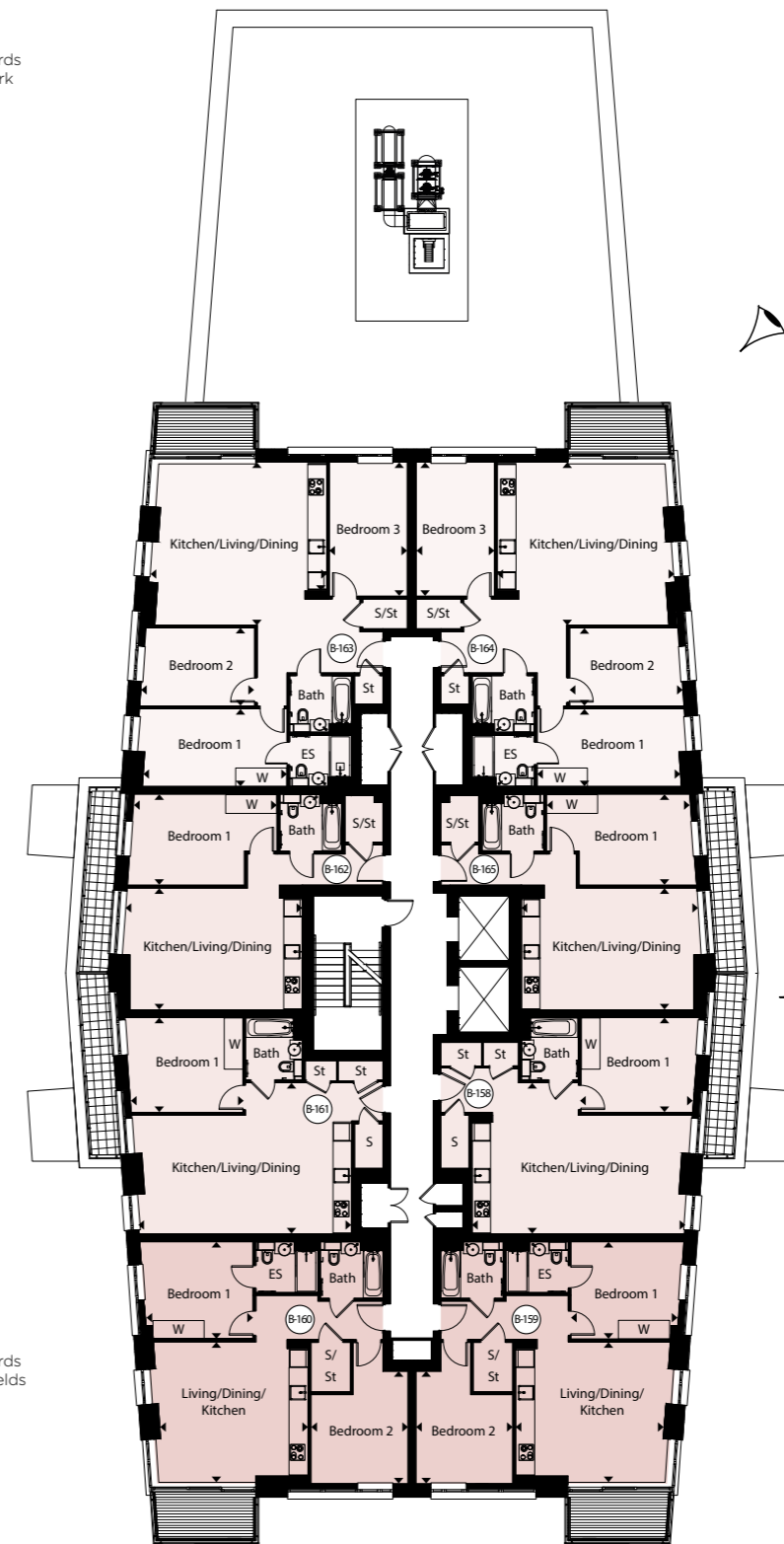
Overlooking Greenford Quay and the Grand Union Canal

THELOCK.LONDON

Views towards Northolt Park



Overlooking the Grand Union Canal with views towards Wembley Park and Horsenden Hill



Views towards Northala Fields

Overlooking the Grand Union Canal with views towards Wembley Park and the city

**KEY:**  
 ES – En suite S – Services  
 St – Storage W – Wardrobe

Greenford station

18	
17	
16	
15	
14	
13	
12	
11	
10	
09	
08	
07	
06	
05	
04	
03	
02	
01	
UG	

Block A

Block B

Floorplan shown is indicative only. The layouts are for indicative purposes only. The developer reserves the right to make changes to these plans prior to exchange of contracts. For exact plot specification, details of external and internal finishes, dimensions and floorplan differences, please speak to a Sales Consultant for more details. The dimensions given are accurate to within plus or minus two inches (50mm) from floor level and include wardrobe spaces where applicable. They are not intended to be used for carpet sizes, appliance space or items of furniture. The information is for general guidance only.

# Eighteenth Floor

## Block B

### Apartment B-166

Kitchen/Living/Dining	7.60m x 4.20m	24'11" x 13'9"
Bedroom 1	4.00m x 3.35m	13'3" x 11'0"
<b>Total Area</b>	<b>62.70 sq. m.</b>	<b>674.90 sq. ft.</b>

### Apartment B-167

Kitchen/Living/Dining	5.20m x 5.00m	17'3" x 16'5"
Bedroom 1	3.90m x 3.45m	12'7" x 11'7"
Bedroom 2	4.00m x 3.40m	13'1" x 11'3"
<b>Total Area</b>	<b>74.50 sq. m.</b>	<b>801.90 sq. ft.</b>

### Apartment B-168

Kitchen/Living/Dining	5.20m x 5.00m	17'3" x 16'5"
Bedroom 1	3.90m x 3.45m	12'7" x 11'7"
Bedroom 2	4.00m x 3.40m	13'1" x 11'3"
<b>Total Area</b>	<b>74.50 sq. m.</b>	<b>801.90 sq. ft.</b>

### Apartment B-169

Kitchen/Living/Dining	7.60m x 4.20m	24'11" x 13'9"
Bedroom 1	4.05m x 3.35m	13'4" x 11'0"
<b>Total Area</b>	<b>60.90 sq. m.</b>	<b>655.50 sq. ft.</b>

### Apartment B-170

Kitchen/Living/Dining	6.30m x 4.30m	20'8" x 14'1"
Bedroom 1	5.20m x 3.20m	17'0" x 10'7"
<b>Total Area</b>	<b>56.50 sq. m.</b>	<b>608.20 sq. ft.</b>

### Apartment B-171

Kitchen/Living/Dining	6.00m x 5.80m	19'9" x 18'11"
Bedroom 1	5.30m x 2.75m	17'4" x 9'0"
Bedroom 2	3.90m x 2.75m	12'10" x 9'0"
Bedroom 3	4.70m x 2.75m	15'7" x 9'0"
<b>Total Area</b>	<b>98.00 sq. m.</b>	<b>1,054.90 sq. ft.</b>

### Apartment B-172

Kitchen/Living/Dining	6.00m x 5.80m	19'9" x 18'11"
Bedroom 1	5.30m x 2.75m	17'4" x 9'0"
Bedroom 2	3.90m x 2.75m	12'10" x 9'0"
Bedroom 3	4.70m x 2.75m	15'7" x 9'0"
<b>Total Area</b>	<b>98.00 sq. m.</b>	<b>1,054.90 sq. ft.</b>

### Apartment B-173

Kitchen/Living/Dining	6.30m x 4.30m	20'8" x 14'1"
Bedroom 1	5.20m x 3.20m	17'0" x 10'7"
<b>Total Area</b>	<b>56.50 sq. m.</b>	<b>608.20 sq. ft.</b>

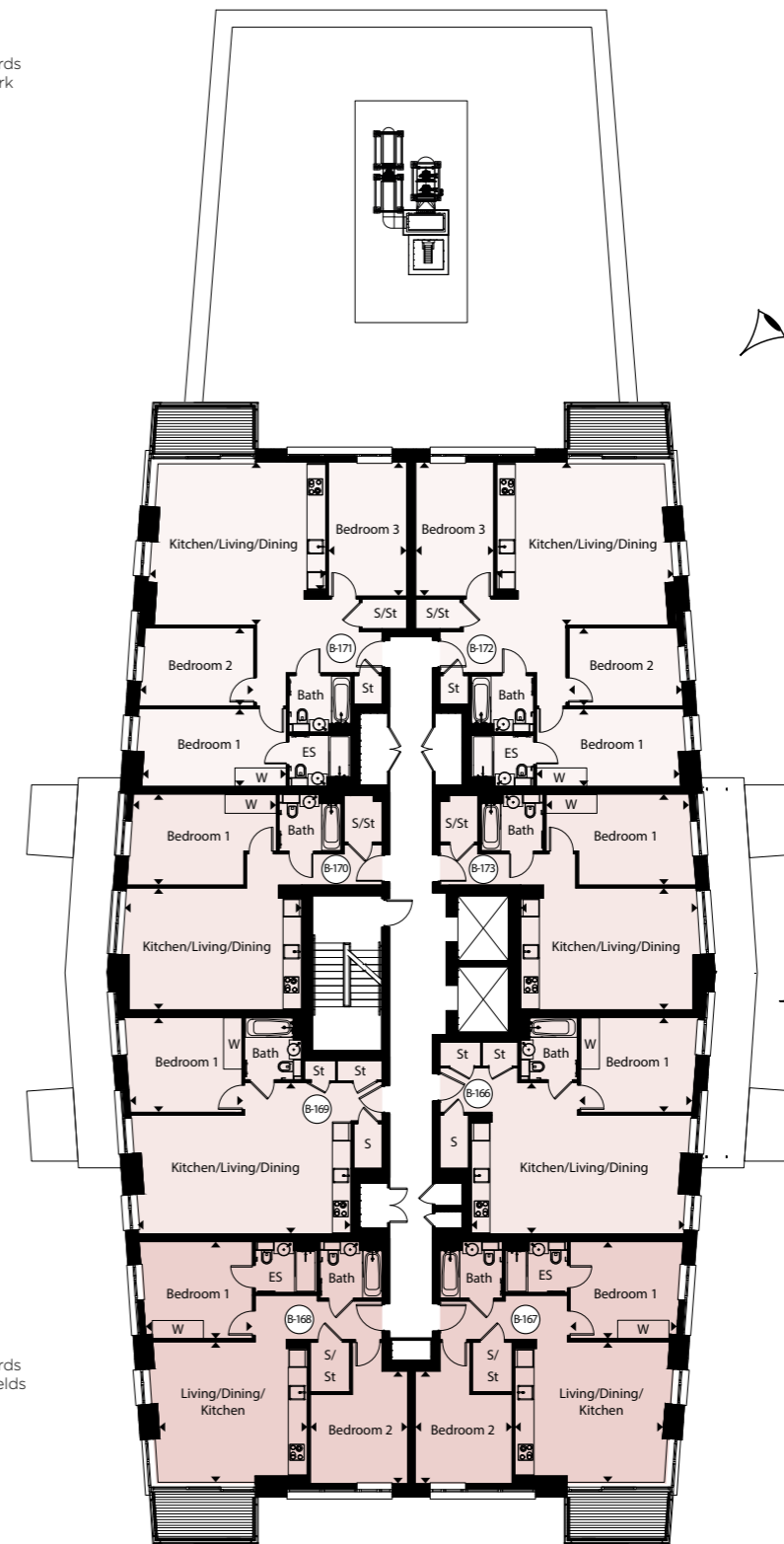
Overlooking Greenford Quay and the Grand Union Canal

THELOCK.LONDON

Views towards Northolt Park



Overlooking the Grand Union Canal with views towards Wembley Park and Horsenden Hill



Overlooking the Grand Union Canal with views towards Wembley Park and the city

Views towards Northala Fields

Greenford station

KEY:  
ES – En suite S – Services  
St – Storage W – Wardrobe

18	
17	
16	
15	
14	
13	
12	
11	
10	
09	
08	
07	
06	
05	
04	
03	
02	
01	
UG	

Block A

Block B

Floorplan shown is indicative only. The layouts are for indicative purposes only. The developer reserves the right to make changes to these plans prior to exchange of contracts. For exact plot specification, details of external and internal finishes, dimensions and floorplan differences, please speak to a Sales Consultant for more details. The dimensions given are accurate to within plus or minus two inches (50mm) from floor level and include wardrobe spaces where applicable. They are not intended to be used for carpet sizes, appliance space or items of furniture. The information is for general guidance only.



# Roof Garden

## Block B



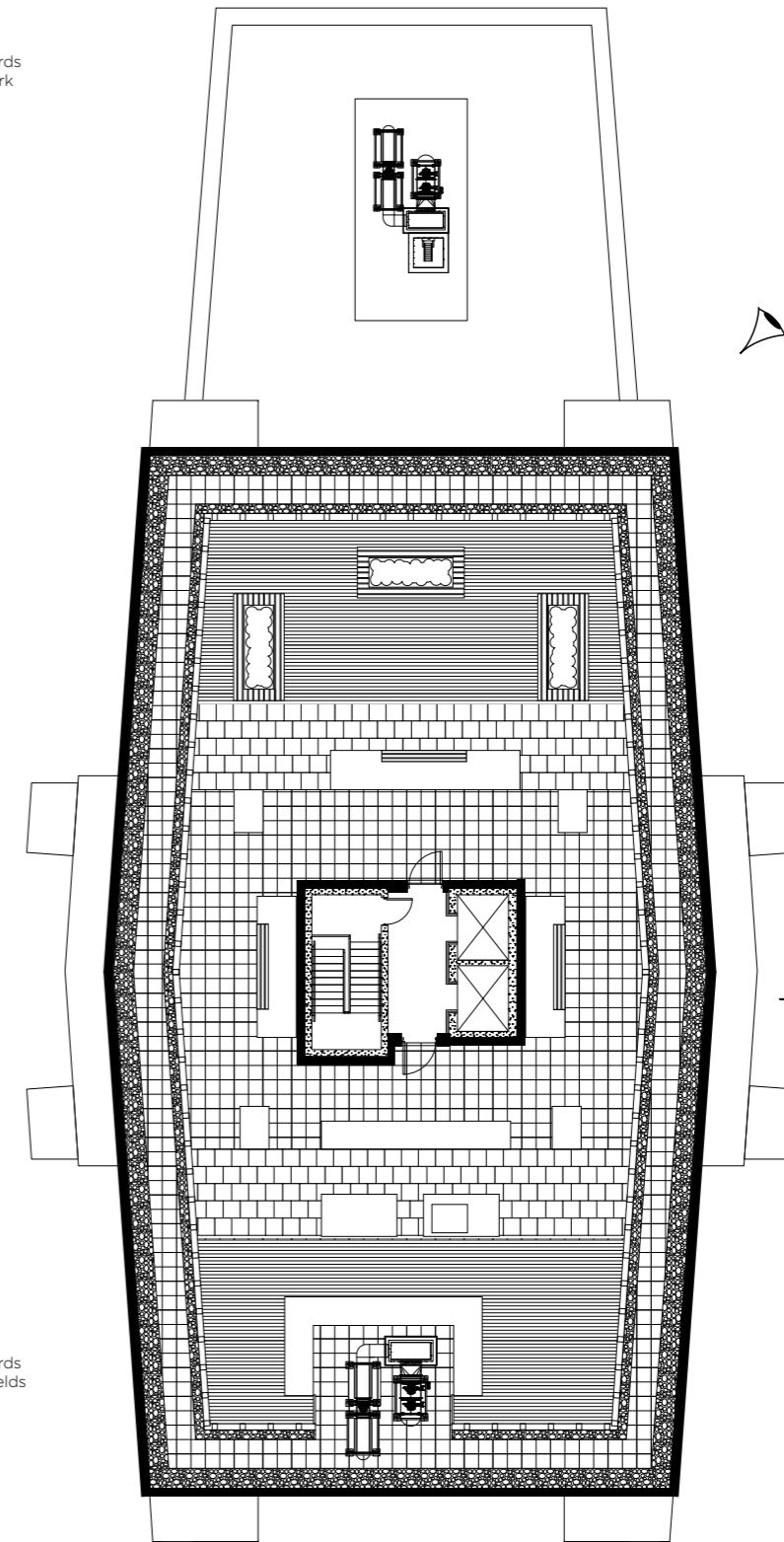
Overlooking Greenford Quay and the Grand Union Canal

THELOCK.LONDON



Views towards Northolt Park

Overlooking the Grand Union Canal with views towards Wembley Park and Horsenden Hill



Overlooking the Grand Union Canal with views towards Wembley Park and the city

Views towards Northala Fields

Greenford station

Roof Garden

18
17
16
15
14
13
12
11
10
09
08
07
06
05
04
03
02
01
UG

06
05
04
03
02
01
UG

Block A

Block B

Floorplan shown is indicative only. The layouts are for indicative purposes only. The developer reserves the right to make changes to these plans prior to exchange of contracts. For exact plot specification, details of external and internal finishes, dimensions and floorplan differences, please speak to a Sales Consultant for more details. The dimensions given are accurate to within plus or minus two inches (50mm) from floor level and include wardrobe spaces where applicable. They are not intended to be used for carpet sizes, appliance space or items of furniture. The information is for general guidance only.

# Open up to high specification



HIGH QUALITY APPLIANCES THROUGHOUT



## General Features

- 16-hour concierge service
- Residents' gymnasium
- Flexible working zone
- Sprinkler system installed
- No combustible materials have been used on the external façade
- Residents' roof terrace
- Landscaped courtyard

## Kitchens

- Onyx grey, handleless fitted units from London designer Urban Myth
- Stone worktops
- Fully integrated Bosch appliances: stainless steel oven, ceramic touch control hob, extractor hood, dishwasher, fridge/freezer, microwave
- Freestanding washer/dryer in storage cupboard
- Glass splashbacks
- Feature lighting under wall units

## Bath & En Suite Shower Rooms

- Pure white Vitra basin and WC and Vado Life mixers
- Bathroom suites with chrome taps and mixers
- Bath with overhead rain shower and glazed screen (where applicable)
- Large shower enclosure to en suite/shower rooms
- Bespoke cabinetry with built-in storage and shaver socket
- Grey Saloni Interior Ceniza Natural wall tiles

## Flooring

- Kitchen, living room and hallway in oak woodstrip laminate flooring
- Bedrooms carpeted in a warm, neutral colour tone
- Bathroom and en suite tiled in light grey Saloni Interior Ceniza Natural floor tiles
- Underfloor heating to living room, bedrooms, hallway and bathrooms

## Décor

- Smooth finish to all walls and ceilings, painted in white emulsion
- White satinwood finish to doors and woodwork

## Fixtures & Fittings

- Fitted wardrobe to main bedroom
- Satin chrome door handles
- TV and telephone outlets to living room, with TV outlets to all bedrooms

## Security & Warranties

- Video entryphone system to all apartments
- Monitored CCTV system
- 10-year 'NHBC' warranty
- Two-year 24/7 emergency cover
- Comprehensive induction with dedicated Customer Service Manager

Specification details are correct at time of going to print but are for guidance only and remain subject to change. Exact fittings and finishes are subject to availability at time of installation.





**The Telford Homes brand delivers high-quality, highly desirable new homes that are supported by first-class customer service.**

Telford Homes is a leading London-focused residential property developer. The company specialises in creating, designing and building innovative landmark developments in some of the most desirable and sought-after locations in the capital. The emphasis of a Telford Homes project is always focused foremost upon quality, luxury and exclusivity.

A high specification, combined with some of the finest designer names, ensures that each individual property meets or exceeds the most demanding expectations.

Architectural innovation and excellence ensures a true landmark development, while a fresh and imaginative approach to communal areas further ensures a truly luxurious lifestyle experience.

[www.telfordhomes.london](http://www.telfordhomes.london)



**telfordhomes**  
A TRAMMELL CROW COMPANY DEVELOPER

Telford Homes, Telford House, Queensgate, Britannia Road, Waltham Cross, Herts, EN8 7TF.

Telford Homes terms and conditions apply. Computer generated imagery and other imagery is indicative only. These particulars are for illustration only. We operate a policy of continuous improvement and individual features such as kitchen and bathroom layouts, doors, windows and elevational treatments may vary from time to time. Specification details are for guide purposes only and remain subject to change without prior notice. Should a replacement be required this will be to an equal or higher standard. Consequently these particulars should be treated as general guidance only and cannot be relied upon as accurately describing any of the Specified Matters prescribed by any order made under the Consumer Protection from Unfair Trading Regulations 2008. Nor do they constitute a contract, part of a contract or a warranty. The Lock at Greenford Quay is a marketing name and may not form part of the final postal address. Computer generated images are indicative only and may be subject to change. Details correct at time of going to print E&OE. July 2021.

THE  
**LOCK**  
AT GREENFORD QUAY

020 3918 4503  
thelock.london



**telfordhomes**  
A TRAMMELL CROW COMPANY DEVELOPER